

BT8380-JPK

SYSTEM X™ JOINING PLATE KIT

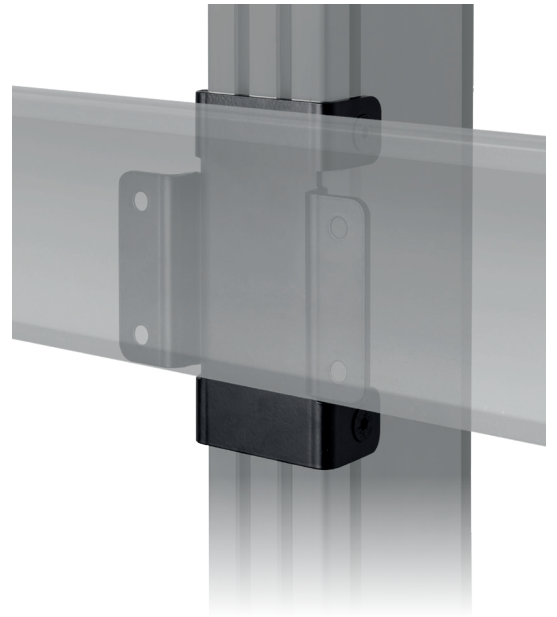
Designed to fit BT8390 mounting rails to BT8380 support columns, the BT8380-JPK is a joining plate which is needed to assemble System X freestanding, mobile or bolt-down video wall solutions. The plate is fitted quickly and easily using the provided sliding nuts and countersunk screws, which allow the mounted rail to be positioned anywhere along the length of the column.

SPECIFICATIONS

Steel thickness	4mm
Brackets supplied per pack	1
Colour	Black

FEATURES

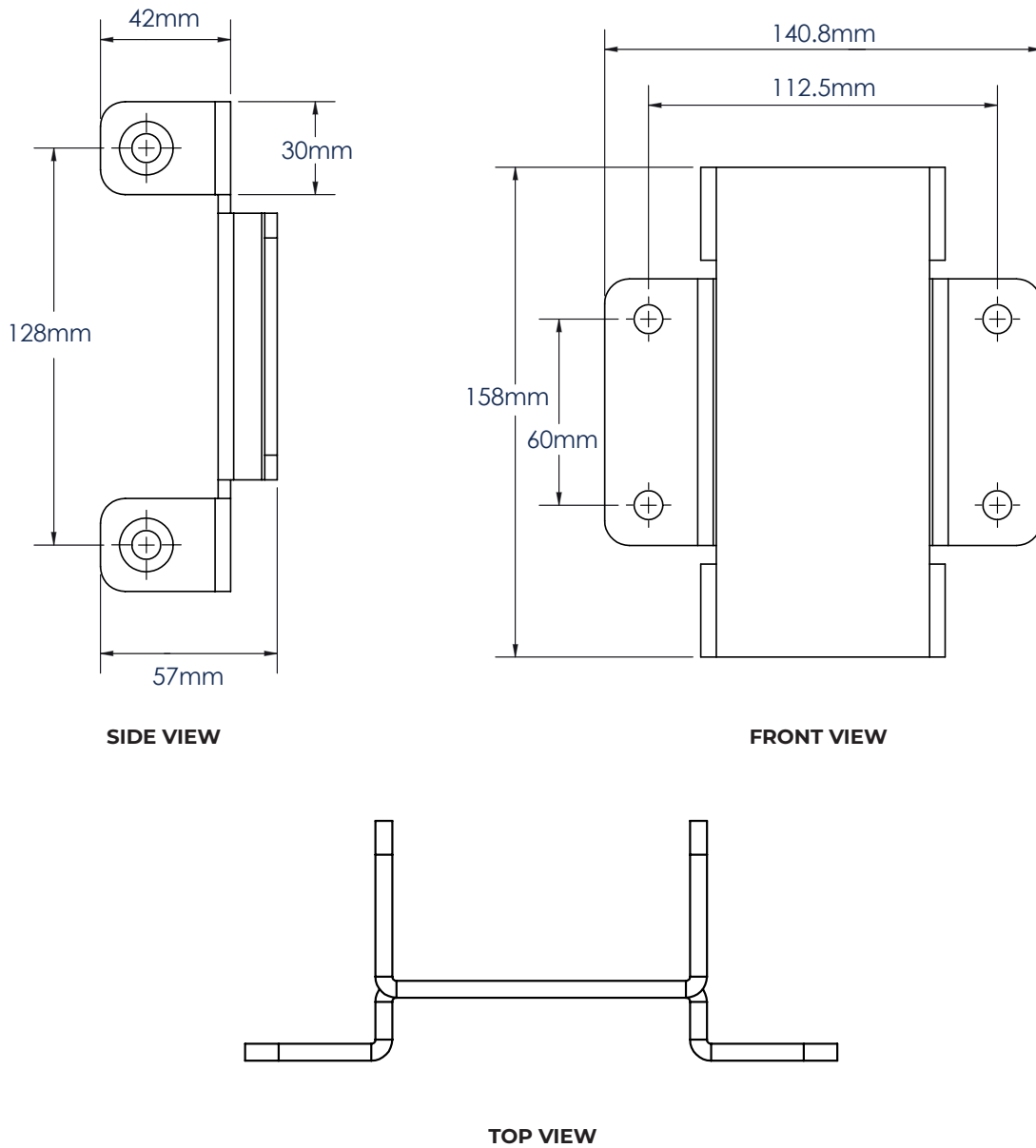
- 1 Used for a variety of fixed, freestanding or mobile video wall installations
 - 2 Sliding nuts allow rails and columns to be positioned as required
 - 3 Also ideal for single and twin screen System X installations
 - 4 Simple assembly for an easy installation
- Connects BT8390 mounting rails to BT8380 vertical columns
 - Can be placed at any height on the column, and anywhere along the rail
 - TUV certified



SYSTEM X



BT8380-JPK



ORDERING INFORMATION

COLOUR	ORDER REF	EAN
Black	BT8380-JPK/B	5019318501104

RELATED PRODUCTS

PRODUCT CODE	NAME	DESCRIPTION
BT8380	System X Vertical Column	Provides a platform for freestanding, mobile or bolt-down solutions
BT8390	System X Mounting Rail	Mounting rails in multiple lengths designed to support a variety of interface arms
BT8380-JPT	Tilting Joining Plate	Connects System X BT8390 mounting rails to BT8380 vertical columns
BT8380-JPR	Column Mounting Plate	Reverse mounts a BT8390 rail onto a BT8380 column