

# BTF843

## UNIVERSAL PORTRAIT FLAT SCREEN FLOOR STAND 1.8M

The BTF843 is a premium mounting solution designed to mount extra-large screens in a portrait orientation. A heavy duty steel base eliminates the need to bolt to the floor and adjustable levelling feet are included to accommodate uneven surfaces. The high-end aesthetic with an anodised aluminium finish and integrated cable management ensures finished installations are neat and tidy, making the BTF843 ideal for use in professional or commercial applications.

### SPECIFICATIONS

Recommended screen size	60" - 85"
Max load	70kg
VESA® and non-VESA fixings	up to 800 x 600mm
Dimensions	W : 890mm D : 604mm H : 1841mm
Colour (column)	Black or Silver

### FEATURES

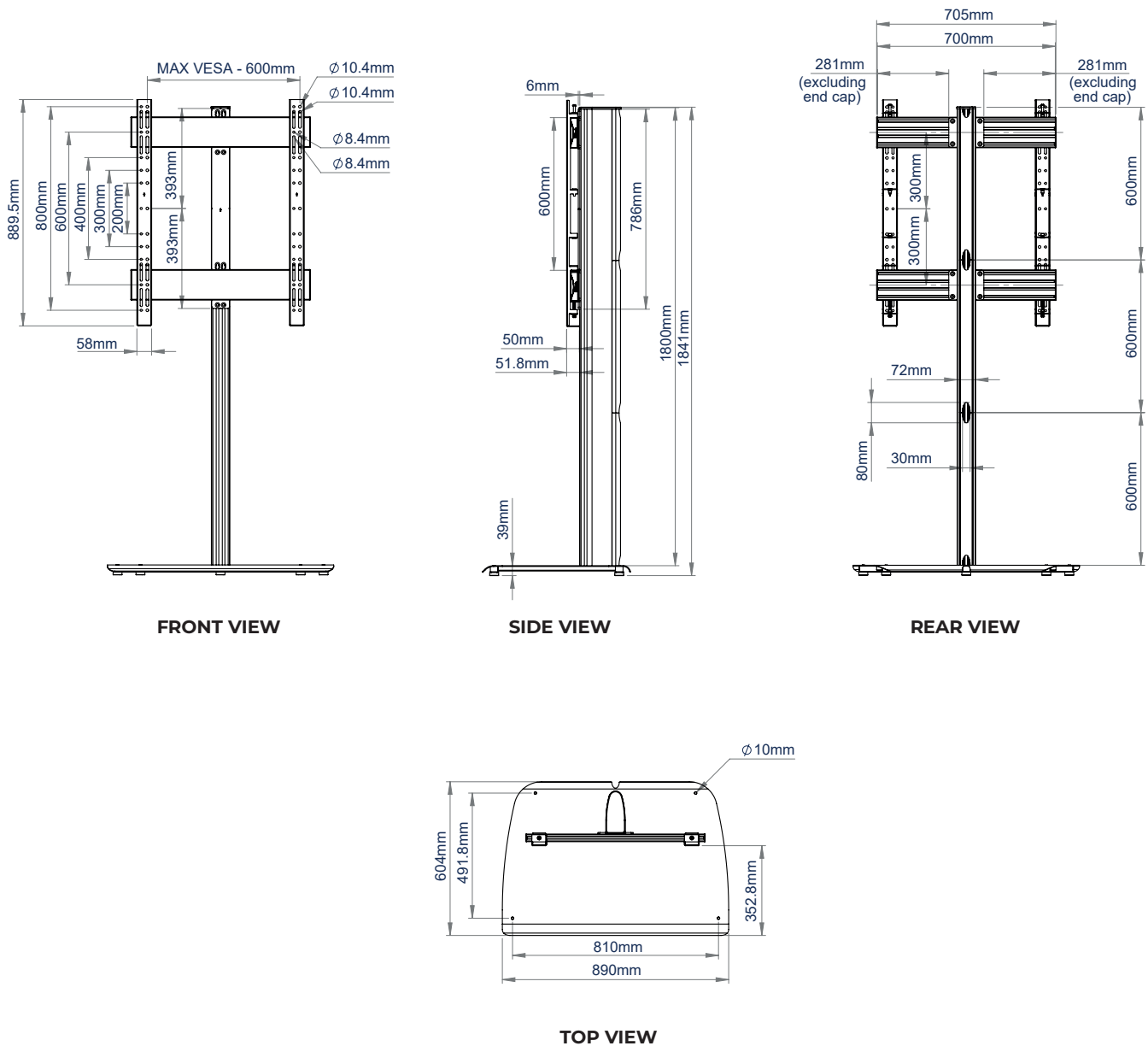
- 1 Supplied with adjustable levelling feet to accommodate uneven floor surfaces
  - 2 Collar compatible accessories such as shelves (available separately) can be fitted directly to the column
  - 3 Arms feature levelling screws to adjust the screen height
  - 4 Integrated cable management for a neat and tidy installation
- Universal design suitable for mounting XL screens in a portrait orientation
  - Heavy duty steel base construction provides stability, eliminating the need to bolt to the floor
  - Can also be bolted to the floor to prevent relocation of the display
  - Safety screws help prevent unauthorised screen removal
  - Simple 'hook-on' screen installation

SYSTEM 

RECOMMENDED MAX SCREEN	MAX LOAD	MAX VESA	POST INSTALL ALIGNMENT	COLOUR OPTIONS	
85" 216cm	70kg	800 x 600			



# BTF843



## ORDERING INFORMATION

COLOUR	ORDER REF	EAN
Black	BTF843/BB	5019318087608
Silver	BTF843/BS	5019318087615

## RELATED PRODUCTS

PRODUCT CODE	NAME	DESCRIPTION
BT7032	Large AV Accessory Shelf	Designed for adding AV accessories to an installation or wall
BT7863	VC Camera Shelf	Designed for adding VC camera / small media players to an installation or wall
BTF840	System X Flat Screen Floor Stand - 1.8m	Designed to mount a single screen in portrait or landscape
BTF841	System X Dual Stack Floor Stand - 1.8m	Designed to mount two screens, one above the other, in portrait or landscape