

BTV114

DOUBLE ARM FLAT SCREEN WALL MOUNT WITH TILT & SWIVEL

Designed to wall mount small sized screens, this double arm wall mount features a tilting interface and three swivel points, allowing quick and easy repositioning of screens as required - whether folded flat against the wall at a depth of 77mm or at maximum extension. Cable management is included to help make a neat and tidy mounting solution which is ideal for home installations as well as commercial applications.



SPECIFICATIONS

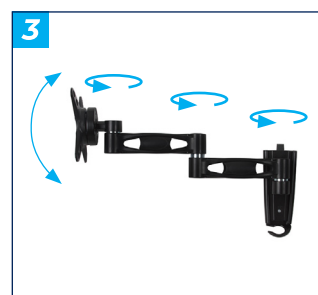
Recommended screen size	up to 28"
Max load	15kg
VESA® compatibility	75 x 75 & 100 x 100
Tilt	+/-15°
Swivel at wall	180°
Swivel at interface	240°
Screen rotation	360°
Distance from wall	77 - 385mm

FEATURES

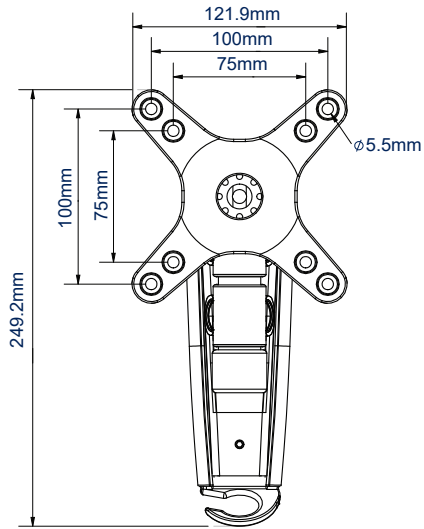
- 1 Screen mounting up to VESA 100
 - 2 Integrated cable management and spirit level included
 - 3 Features swivel and up / down tilt
 - 4 Screen rotation allows screen to be positioned in landscape or portrait
- Three swivel points allow for easy repositioning of the screen
 - Folds flat to the wall
 - Simple 'hook-on' installation with all mounting hardware included



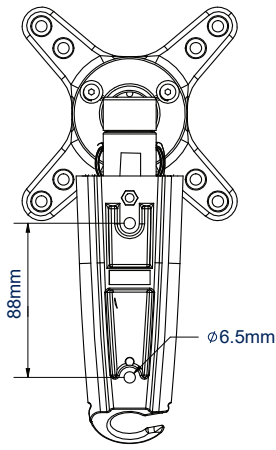
RECOMMENDED MAX SCREEN	MAX SCREEN WEIGHT	MAX VESA	TILT	SWIVEL	ROTATION	
28" 71cm	15kg	100	15° 15°	180°	360°	



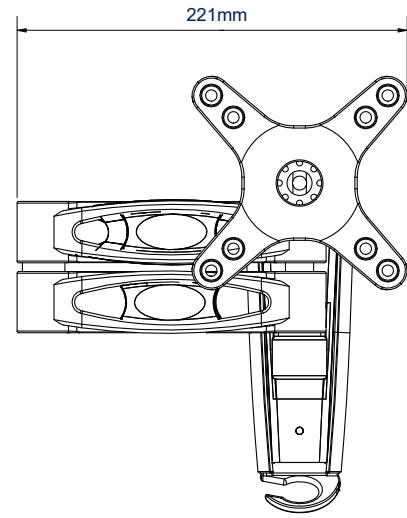
BTv114



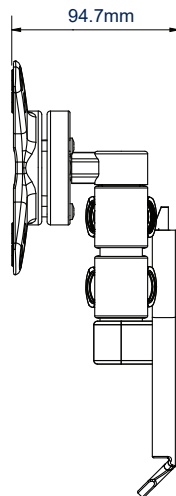
FRONT VIEW



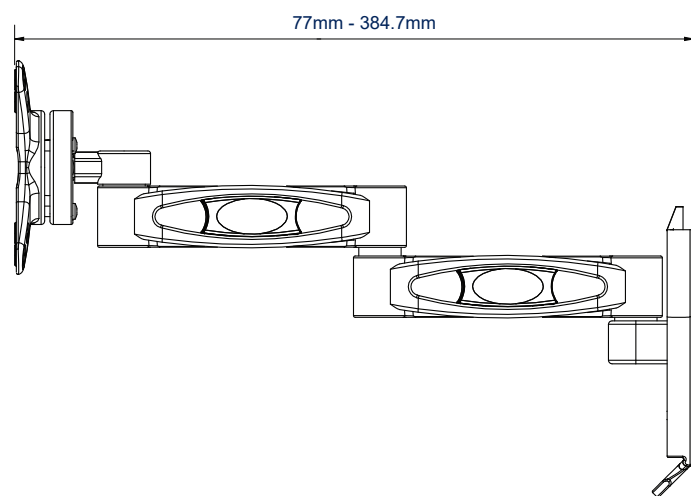
REAR VIEW



FRONT VIEW WITH ARM FOLDED FLAT



SIDE VIEW WITH ARM FOLDED



SIDE VIEW WITH ARM EXTENDED

ORDERING INFORMATION

COLOUR	ORDER REF	EAN
Black	BTv114/B	50193184440595

RELATED PRODUCTS

PRODUCT CODE	NAME	DESCRIPTION
BTv920	AV Component Shelf	Adjustable shelf designed for all common AV equipment
BTv113	Single Arm Wall Mount with Tilt & Swivel	Designed for screens up to 23"
BTv504	Double Arm Wall Mount with Tilt & Swivel	Designed for screens up to 42"
BT7513	Double Arm Wall Mount with Tilt & Swivel	Designed for screens up to 23"