



MAJOR PRO-C is a range of motorized screens suitable to cover dimensions from 500 cm. up to 700 cm. of width. These screens are mainly used in large environments like meeting rooms, universities, small theatres, hotels. Very reliable screens are supplied with a white aluminium cabinet suitable to fit different aesthetic situations.

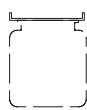
Available in 4:3, 16:9 and 16:10 ratios or **bespoke sizes**.



Truss mounting brackets
(optional - for details see p. 72)



False ceiling trim kit
(optional - for details see p. 54)

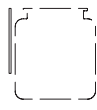


Ceiling mounting brackets

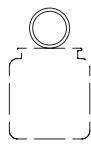


n.1 On/Off switcher

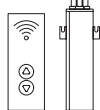
INCLUDED



Wall mounting brackets



Truss mounting brackets



Kit RF Remote control with external receiver



Interface switch 12 volt



Low voltage contact interface



Multiple control interface set

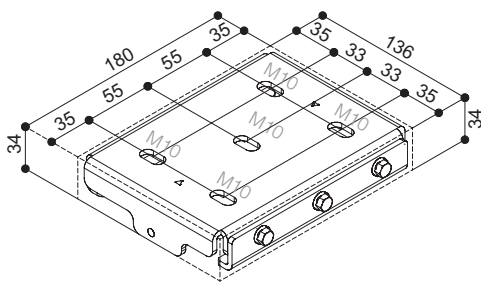


Interface RS485

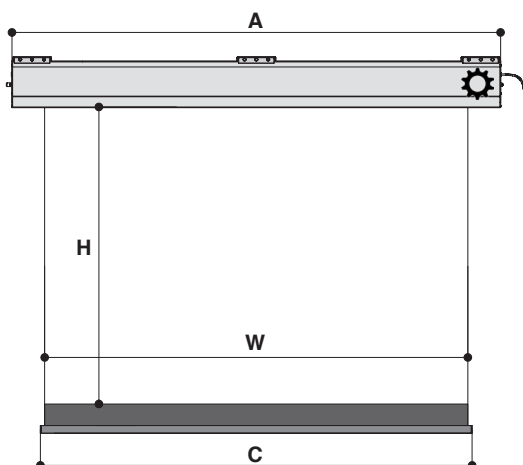
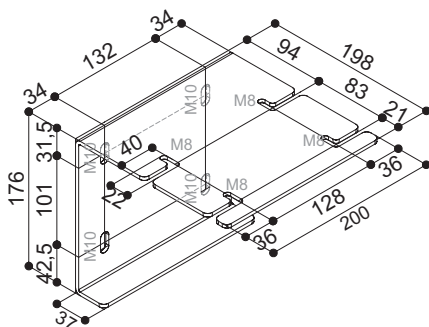
OPTIONAL pag 70-71



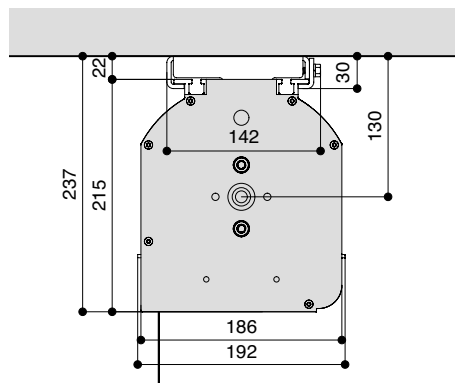
CEILING MOUNTING BRACKET



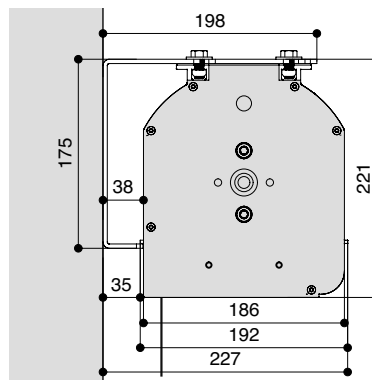
WALL MOUNTING BRACKET *(optional)*



CEILING MOUNTING




WALL MOUNTING



TECHNICAL SPECIFICATIONS

- Silent motor system provides a smooth and quiet operation

- Power: **40 Nm**
- Speed: **17 rpm**
- Power supply: **230V / 50 Hz**
- Consumption: **322 W**
- Certification: **IMQ**

AVERAGE TIME OF ROLLING UP/DOWN		
	H (cm)	Sec.
	375	30
	450	36
	525	42

- Strong steel and aluminium construction
- Aluminium housing with multiple fixing points, using sliding brackets for a variety of installation options
- Black dowel bar: height 35 mm. - depth 20 mm.
- **Standard black bottom border of 10 cm.**
- Housing painted with white epoxy powders (RAL 9010)
- Ceiling mounting brackets included
 - n. 3 for Major Pro-C 500 cm. and 600 cm. of width
 - n. 4 for Major Pro-C 700 cm. of width
- On/Off switcher included
- Power cable located at the **right** side of the screen housing seen from the front
- Flame retardant projection surfaces
- Side black borders of 5 cm. (*optional*)
- Black top drop (*optional*)
- Wall mounting brackets (*optional*)
- **Screen housing available in different colours** (*optional*)

DIMENSIONS <small>measures in cm</small>				
4:3 Ratio Viewing area (WxH)	16:10 Ratio Viewing area (WxH)	16:9 Ratio Viewing area (WxH)	Overall dimensions A - C	Approx. net weight (Kg)
500 x 375	500 x 313	500 x 281	520 - 505	89
600 x 450	600 x 375	600 x 337	620 - 605	106
700 x 525	700 x 437	700 x 394	720 - 705	124

PROJECTION CLOTHS			
Front projection surfaces	Gain	Rear projection surfaces <i>**no black borders**</i>	Gain
White	1.2	Rear Plus	1.1
Matte White	1.2	Front Rear	0.9
Pure KS	1.1		
Pure Matte KS	1.1		
Microholes	1.0		
Green Screen			

The measures in the drawings are expressed in millimetres.

Warranty: 5 years on the motor - 24 months on the other components



ENGINEERED LIKE NO OTHER SCREEN IN THE WORLD
www.screenint.com