

PHILIPS

WUXGA LCD
monitor

Business Monitor

3000 series

24 (24.1"/61.13 cm diag.)

1920 x 1200 (WUXGA)

24B2U3301D



Redefining workflow productivity

This Philips WUXGA (1920 x 1200) 16:10 monitor is equipped with an IPS panel for wide viewing angles. The 100 Hz refresh rate ensures smooth performance. It features SoftBlue technologies to reduce eye strain and support all-day productivity.

Designed for the way you work

- Built-in stereo speakers for multimedia
- SmartErgoBase enables user-friendly ergonomic adjustments
- Smart Link Sync: for uniform daisy-chained displays
- Eyesafe-certified blue light protection and colour accuracy
- Ultra Slim Bezel: for minimal edges and more screen
- SoftBlue Technology: for comfortable viewing
- Less eye fatigue with Flicker-Free technology

Single cable USB-C connection

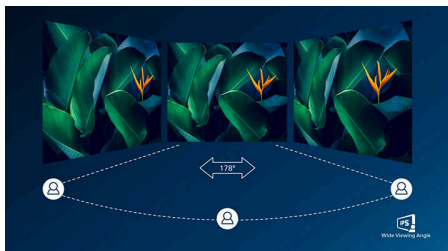
- RJ-45 to USB-C gives easy network connection with security
- USB 3.2 high-speed data transfer

Superb Picture Quality

- 100 Hz refresh rates for ultra-smooth images
- 16:10 WUXGA display for more productivity
- IPS LED wide view technology for image and colour accuracy

Highlights

IPS technology



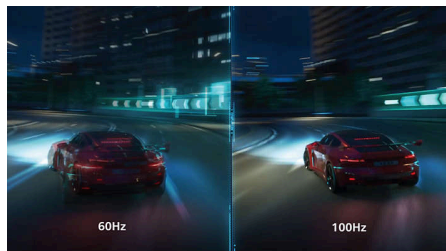
IPS displays use an advanced technology that gives you extra-wide viewing angles of 178/178 degrees, making it possible to view the display from almost any angle. Unlike standard TN panels, IPS displays give you remarkably crisp images with vivid colours, making them ideal not only for Photos, movies and web browsing, but also for professional applications that demand colour accuracy and consistent brightness at all times.

16:10 WUXGA display



Experience the power of WUXGA resolution (1920 x 1200), offering a taller 16:10 aspect ratio compared to standard Full HD. That extra vertical space means less scrolling and more room to view documents, spreadsheets and web pages at once. Enjoy a more comfortable, efficient workflow designed to boost productivity and keep you focused throughout the day.

100 Hz fast refresh



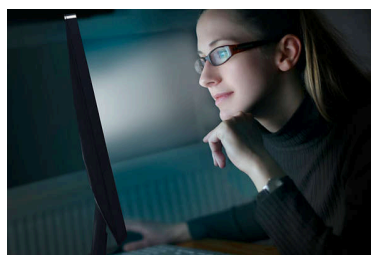
This Philips display refreshes the screen image up to 100 times per second which makes this monitor much faster than a standard display. With a 100 Hz frame rate, gamers are able to find those critical images on the screen that show enemy movement in an ultra-smooth motion so that they are easily targetable.

Ultra-Slim Bezel



This monitor makes your viewing experience feel more seamless and complete by reducing the amount of frame surrounding the screen. The Ultra-Slim Bezel feature makes for an elegant transition from the screen to the narrow monitor bezel, thereby making it more beautiful in form and function.

SoftBlue Technology



SoftBlue LED technology, combined with the monitor's low blue light panel, is an effective solution to reduce the adverse health effects

caused by high exposure to blue light. In this monitor's panel, the ratio of light is reduced by nearly 50%, while the SoftBlue LED technology works simultaneously by reducing harmful blue light rays emitted from the screen. Not to mention, the SoftBlue LED technology is tested and certified by TÜV Rheinland Eyesafe for its effectiveness in reducing blue light emissions.

Flicker-Free technology



Due to the way brightness is controlled on LED-backlit screens, some users experience flicker on their screen which causes eye fatigue. Philips Flicker-Free technology applies a new solution to regulate brightness and reduce flicker for more comfortable viewing.

Smart Link Sync



Easily create a seamless multi-monitor workspace with Smart Link Sync, designed to automatically align display settings across daisy-chained monitors. Whether you're designing, presenting or multitasking, enjoy consistent brightness and colour without manual tweaks. Choose from OSD Sync or Light Sync modes (Low, Mid or High) on the primary monitor to match your environment. For identical monitors, any mode ensures uniform visuals; for mixed models, Light Sync intelligently adjusts luminance for a balanced, professional look across screens.



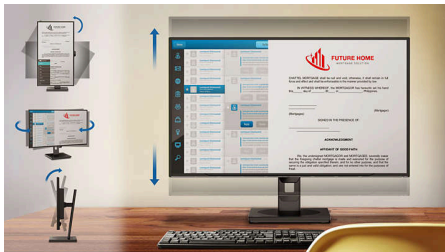
Highlights

TUV Rheinland Eyesafe - RPF® 40



Philips display meets the TUV Rheinland Eyesafe® standard to truly protect you from long exposure to blue light. The always-on blue light filter not only helps reduce digital eye strain, but also guarantees colour integrity.

SmartErgoBase



The SmartErgoBase is a monitor base that delivers ergonomic display comfort and provides cable management. The base can swivel, tilt and

rotate to various angles to ensure maximum comfort. The height-adjustable stand guarantees the optimal viewing level, reducing the physical strains of a long workday, while cable management reduces cable clutter and keeps the workspace neat and professional.

Built-in stereo speakers



A pair of high-quality stereo speakers built into a display device. They may be visible front firing, or invisible down firing, top firing, rear firing etc. depending on model and design.

High-speed data transfer

USB 3.2 high-speed data transfer

USB-C Docking with RJ45



Simplify all peripherals from monitor to PC using one-cable docking USB Type-C connector, including networking, high-resolution video output from PC to monitor, and surfing on the Internet without an additional network cable, even without a LAN port on your notebook. RJ45 connection through USB-C offers a fast and secure connection when needed. Getting the fastest data speeds allows you to transfer data from a HDD to your PC faster than ever. Additionally, USB-C with power delivery can even enable you to power and charge your notebook from the monitor, eliminating the need for extra power cables.

Specifications

Picture/Display

Panel Size: 24.1 inch/61.13 cm
Aspect ratio: 16:10
LCD panel type: IPS technology
Backlight type: W-LED system
Pixel pitch: 0.270(H) mm x 0.270(V) mm
Optimum resolution: 1920 x 1200@100 Hz
Brightness: 300 cd/m²
Display colours: 16.7 M (8 bits)
Colour gamut (typical): sRGB 115%, NTSC 110%
 *
Contrast ratio (typical): 1500:1
SmartContrast: 50,000,000:1
Response time (typical): 4 ms (Grey to Grey)*
Viewing angle: 178° (H)/178° (V), @ C/R > 10
Picture enhancement: SmartImage
Effective viewing area: 528.2(H) x 339(V) mm
Scanning Frequency: HDMI/DP: 30 - 135 kHz
 (H)/48 - 100 Hz (V)
sRGB
SoftBlue
Flicker-free
Pixel Density: 94.07 PPI
Display Screen Coating: Anti-Glare, 3H, Haze 25%
EasyRead
Adaptive sync
EyeSafe
Smart Link Sync: When used as a primary or secondary monitor*

Connectivity

Signal Input: HDMI 1.4 x 1, DisplayPort 1.4 x 1, USB-C x 1 (upstream, DP Alt mode, Data, PD)
Sync Input: Separate Sync, Sync on Green
Audio (In/Out): Audio out
RJ45: Ethernet LAN (10 M/100 M/1 G)
HDCP: HDCP 1.4 (HDMI/DisplayPort/USB-C)
HBR3: Yes (DP, USB-C)
USB Hub: USB3.2, Gen1, 5G, Upstream: USB-B x 1; Downstream: USB-A x 4 (with x 1 fast charge B.C 1.2), USB-C x 1 (data, 15 W)

Power Delivery

Max power delivery: Up to 90 W (5 V/3 A, 7 V/3 A, 9 V/3 A, 10 V/3 A, 12 V/3 A, 15 V/3 A, 20 V/3.25 A, 20 V/4.5 A)
Version: USB PD version 3.0

Convenience

Built-in Speakers: 2 W x 2
Plug and Play Compatibility: DDC/CI, Mac OS X, sRGB, Windows 11/10
User convenience: SmartImage, Input, Brightness, Menu, Power On/Off
OSD Languages: Brazil Portuguese, Czech, Dutch, English, French, Finnish, German, Greek, Hungarian, Italian, Japanese, Korean, Portuguese, Polish, Russian, Simplified Chinese, Spanish, Swedish, Traditional Chinese, Turkish, Ukrainian
Other convenience: Kensington lock, VESA mount (100 x 100 mm)
Control software: SmartControl

Stand

Height adjustment: 150 mm
Pivot: -/+90 degree
Swivel: -/+ 180 degree
Tilt: -5/30 degree

Power

ECO mode: 11.9 W (typ.)
Power supply: Built-in, 100–240 VAC, 50–60 Hz
Off mode: 0.3 W (typ)
On mode: 17.72 W (typ.) (Energy Star test method)
Standby mode: 0.3 W (typ.)
Power LED indicator: Operation - White, Standby mode - White (flashing)
Energy Label Class: C

Dimensions

Packaging in mm (W x H x D):
 615 x 420 x 139 mm
Product without stand (mm): 535 x 348 x 46 mm
Product with stand (max height):
 535 x 531 x 227 mm

Weight

Product with packaging (kg): 7.89 kg
Product with stand (kg): 5.76 kg
Product without stand (kg): 4.25 kg

Operating conditions

Altitude: Operation: +12,000 ft (3658 m), Non-operation: +40,000 ft (12,192 m)
Temperature range (operation): 0°C to 40 °C
Relative humidity: 20%-80 %
Temperature range (storage): -20°C to 60 °C
MTBF (demonstrated): 70,000 hrs (excluded backlight)

Sustainability

Environmental and energy: Energy Star, EPEAT*, RoHS
Post-consumer recycled plastic: 85%
Recyclable packaging material: 100 %
Specific Substances: PVC/BFR free housing

Compliance and standards

Regulatory Approvals: CB, CE Mark, ETL, CEC, TUV/GS, TUV Ergo, TCO Certified, TCO Certified Edge, EAC, EAC ROHS, PSE, VCCI, UKCA, EMF, FCC, ICES-003, TÜV Rheinland Low Blue Light (Hardware Solution), eyesafe® CERTIFIED 2.0

Cabinet

Finish: Texture
Foot: Black
Front bezel: Black
Rear cover: Black

What's in the box?

Cables: HDMI cable, DP cable, USB-C to C/C cable, Power cable.
Monitor with stand
User Documentation



* "IPS" word mark / trademark and related patents on technologies belong to their respective owners.

* Response time value equal to SmartResponse

* sRGB area based on CIE 1931; NTSC area based on CIE 1976

* EPEAT rating is valid only where Philips registers the product. Please visit <https://www.epeat.net/> for registration status in your country.

* The 5 year warranty is a voluntary manufacturer's limited warranty. It applies only in the countries listed on this page <https://www.philips.co.uk/c-e/so/monitors/tco-certified-edge>. For consumers, it is provided in addition to, and without affecting, their legal rights under applicable national laws. For non-consumer (business/professional) end users, only the manufacturer's limited warranty terms apply.

* For Smart Link Sync to function properly, all daisy-chained monitors must be compatible with Smart Link.

* The products and accessories listed on this leaflet may differ by country and region.

* The monitor may look different from feature images.