

# PHILIPS

## LCD monitor

### Business Monitor

5000 series

27" (68.5 cm)

2560 x 1440 (Quad HD)

27B2G5500



## Incredible efficiency meets ultra power-saving

This monitor is built for energy efficiency. With its LightSensor and PowerSensor, these two features combine to make a power-saving monitor that is a great all-around option for your office.

### Brilliant performance

- 100 Hz Fast Refresh: for ultra-smooth images

### Eco-friendly materials for sustainability

- 100% recyclable material and FSC-certified packaging
- Built with 85% PCR and 5% ocean-bound plastics
- 100% recycled aluminium base and stand
- Kapok fibre bag: soft, compostable, damage-free delivery

### Energy efficiency - Eco-conscious power savings

- LightSensor for the perfect brightness with minimal power
- PowerSensor saves up to 70% energy costs

### Designed for comfortable productivity

- Eyesafe-certified blue light protection and colour accuracy
- SoftBlue Technology: for comfortable viewing
- LowBlue mode and Flicker-free easy-on-the eyes viewing

# Highlights

## 100 Hz fast refresh



This Philips display redraws the screen image up to 100 times per second, which makes this monitor much faster than a standard display. With a 100 Hz frame rate, gamers are able to find those critical images on the screen that show enemy movement in ultra-smooth motion so that they are easily targetable.

## Eco-Friendly Packaging



This monitor is packaged in 100% recyclable material and is FSC-certified. This certification guarantees that the packaging is designed with a focus on environmental sustainability.

## EcoSmart materials



Being eco-friendly means repurposing old materials. That's why this Philips monitor is made with 85% post-consumer recycled plastics and 5% ocean-bound plastic, therefore making a concerted effort to reduce waste.

## 100% Recycled Aluminium



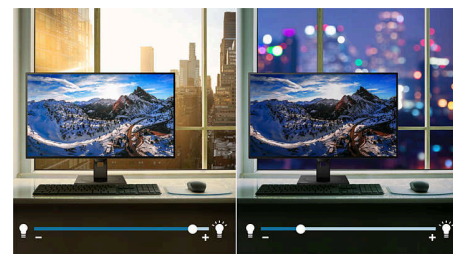
Designed with sustainability in mind, this eco-conscious choice blends sleek durability with a reduced environmental footprint – delivering a strong, stylish foundation for your workspace.

## Kapok fibre bag

Our kapok fibre bag is soft, lightweight and made from natural plant fibres, which protect your screen from scratches and damage during delivery. It feels gentle to the touch, is safe to handle and is fully compostable; it returns to the

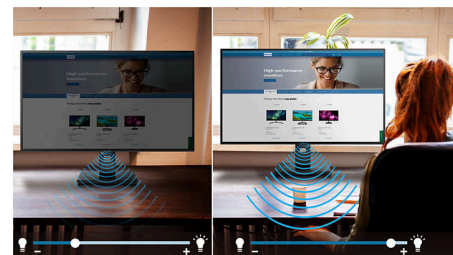
earth when its job is done. This bag offers eco-friendly protection during transportation and delivery. Easy to unpack and kind to the planet.

## LightSensor



LightSensor uses a smart sensor to adjust the picture brightness depending on the light conditions in the room for the perfect picture with minimal power usage.

## PowerSensor



PowerSensor is a built-in 'people sensor' that transmits and receives harmless infrared signals to determine if the user is present and automatically reduces monitor brightness when the user steps away from the desk, cutting energy costs by up to 70 percent and prolonging monitor life.



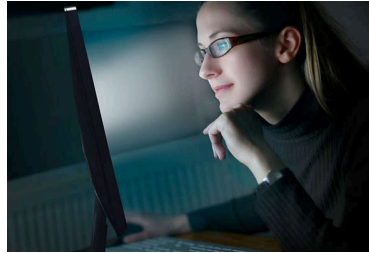
## Highlights

### TUV Rheinland Eyesafe - RPF® 40



Philips display meets the TUV Rheinland Eyesafe® standard to truly protect you from long exposure to blue light. The always-on blue light filter not only helps reduce digital eye strain, but also guarantees colour integrity.

### SoftBlue Technology



SoftBlue LED technology, combined with the monitor's low blue light panel, is an effective solution to reducing the adverse health effects caused by high exposure to blue light. In this monitor's panel, the ratio of light is reduced by nearly 50 percent while the SoftBlue LED technology works simultaneously by reducing harmful blue light rays emitted from the screen. Additionally, the SoftBlue LED technology is

tested and certified by TUV Rheinland Eyesafe for its effectiveness in reducing blue light emissions.

### LowBlue Mode and Flicker-free



Our LowBlue Mode and Flicker-free technology have been developed to reduce eye strain and fatigue often caused by long hours in front of a monitor.

# Specifications

## Picture/Display

**Panel Size:** 27 inch/68.5 cm  
**Aspect ratio:** 16:9  
**LCD panel type:** IPS LCD  
**Backlight type:** W-LED system  
**Pixel pitch:** 0.2331 x 0.2331 mm  
**Optimum resolution:** 2560 x 1440 @ 60 Hz  
**Brightness:** 300 cd/m<sup>2</sup>  
**Display colours:** 16.7 M (true 8 bits)  
**Colour gamut (typical):** sRGB: 108%, NTSC: 94% \*  
**Contrast ratio (typical):** 1500:1  
**SmartContrast:** 50,000,000:1  
**Response time (typical):** 4 ms (Grey to Grey)\*  
**Viewing angle:** 178° (H)/178° (V), @ C/R > 10  
**Picture enhancement:** SmartImage  
**Maximum resolution:** 2560 x 1440 @ 100 Hz  
**Effective viewing area:** 596.74 (H) x 335.66 (V) mm  
**Scanning Frequency:** 30k - 150 kHz (H)/48 - 100 Hz (V)  
**sRGB**  
**SoftBlue**  
**Flicker-free**  
**Pixel Density:** 109 PPI  
**LowBlue Mode**  
**Display Screen Coating:** Anti-Glare, 3H, Haze 25%  
**EasyRead**  
**Adaptive sync**

## Connectivity

**Signal Input:** HDMI 2.0 x 2, DisplayPort 1.4 x 1  
**Sync Input:** Separate Sync, Sync on Green  
**Audio (In/Out):** Audio out  
**HDCP:** HDCP 1.4 (HDMI/DisplayPort); HDCP 2.2 (HDMI/DisplayPort)  
**USB Hub:** USB3.2, Gen1, 5G; Upstream: USB-B x 1; Downstream: USB 3.2 x 4, (with 1 for fast charge B.C 1.2)

## Convenience

**Built-in Speakers:** 3 W x 2  
**Plug and Play Compatibility:** DDC/CI, Mac OS, sRGB, Windows 11/10  
**User convenience:** SmartImage, Input, Brightness, Menu, Power On/Off  
**OSD Languages:** Brazil Portuguese, Czech, Dutch, English, French, Finnish, German, Greek, Hungarian, Italian, Japanese, Korean, Portuguese, Polish, Russian, Simplified Chinese, Spanish, Swedish, Traditional Chinese, Turkish, Ukrainian

**Other convenience:** Kensington lock, VESA mount (100 x 100 mm), Earphone hook  
**Control software:** SmartControl

## Stand

**Height adjustment:** 150 mm  
**Pivot:** -/+90 degree  
**Swivel:** -/+ 180 degree  
**Tilt:** -5/30 degree

## Power

**ECO mode:** 8.3 W (typ.)  
**Power supply:** Built-in, 100–240 VAC, 50–60 Hz  
**Off mode:** 0.3 W (typ.)  
**On mode:** 11.11 W (typ.) (Energy Star test method)  
**Standby mode:** 0.3 W (typ.)  
**Power LED indicator:** Operation - White, Standby mode - White (flashing)  
**Energy Label Class:** B

## Dimensions

**Packaging in mm (W x H x D):**  
730 x 445 x 159 mm  
**Product without stand (mm):** 614 x 368 x 58 mm  
**Product with stand (max height):**  
614 x 543 x 235 mm

## Weight

**Product with packaging (kg):** 9.77 kg  
**Product with stand (kg):** 6.77 kg  
**Product without stand (kg):** 5.01 kg

## Operating conditions

**Altitude:** Operation: +12,000 ft (3658 m), Non-operation: +40,000 ft (12,192 m)  
**Temperature range (operation):** 0°C to 40 °C  
**Relative humidity:** 20%-80 %  
**Temperature range (storage):** -20°C to 60 °C  
**MTBF (demonstrated):** 70,000 hrs (excluded backlight)

## Sustainability

**Environmental and energy:** Energy Star 8.0, EPEAT\*, RoHS, PowerSensor, LightSensor  
**Post-consumer recycled plastic:** 85%+OBP 5%  
**Recyclable packaging material:** 100 %  
**Specific Substances:** Mercury free, PVC/BFR free housing

## Compliance and standards

**Regulatory Approvals:** CB, CE Mark, EPA, EnergyStar, TUV/GS, TUV Ergo, TCO Certified, EAC, EAEU RoHS, UKCA, EMF, FCC, ICES-003, eyesafe® CERTIFIED 2.0, TÜV Rheinland Low Blue Light (Hardware Solution)

## Cabinet

**Finish:** Texture  
**Foot:** Silver  
**Front bezel:** Charcoal  
**Rear cover:** Charcoal

## What's in the box?

**Cables:** HDMI cable, DisplayPort cable, Power cable  
**Monitor with stand**  
**User Documentation**

