

PHILIPS

LCD monitor

Business Monitor

5000 series

27" (68.6 cm)

2560 x 1440 (Quad HD)

27B2G5601



Incredible efficiency meets ultra power-saving

This monitor is built for energy efficiency. The LightSensor and PowerSensor 2 features combine to make a power-saving monitor that is equipped with many other assets designed to facilitate work tasks.

Brilliant performance

- Built-in USB-C docking station

Eco-friendly materials for sustainability

- 100% recyclable material and FSC-certified packaging
- Built with 85% PCR and 5% ocean-bound plastics
- Kapok fibre bag: soft, compostable, damage-free delivery
- 100% recycled aluminium base and stand

Energy efficiency - Eco-conscious power savings

- PowerSensor 2: for optimised energy efficiency

Designed for comfortable productivity

- Eyesafe-certified blue light protection and colour accuracy
- SoftBlue Technology: for comfortable viewing
- MultiView enables simultaneous dual connection and view
- LowBlue mode and Flicker-free easy-on-the eyes viewing

Highlights

Built-in USB-C docking station



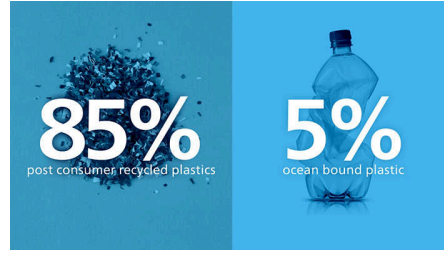
This Philips display features a built-in USB type-C docking station with power delivery. Its slim, reversible USB-C connector allows for easy, one-cable docking. Keep it simple by connecting all your peripherals, like your keyboard, mouse and your RJ-45 Ethernet cable to the monitor's docking station. Simply connect your notebook to this monitor with a single USB-C cable to watch high-resolution video and transfer super-speed data while powering up and recharging your notebook at the same time.

Eco-Friendly Packaging



This monitor is packaged in 100% recyclable material and is FSC-certified. This certification guarantees that the packaging is designed with a focus on environmental sustainability.

EcoSmart materials



Being eco-friendly means repurposing old materials. That's why this Philips monitor is made with 85% post-consumer recycled plastics and 5% ocean-bound plastic, therefore making a concerted effort to reduce waste.

100% Recycled Aluminium

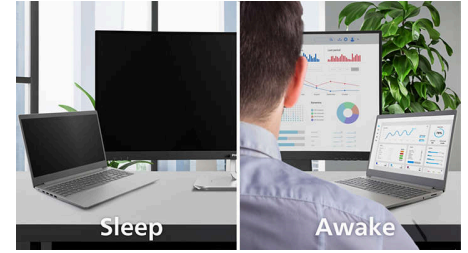


Designed with sustainability in mind, this eco-conscious choice blends sleek durability with a reduced environmental footprint – delivering a strong, stylish foundation for your workspace.

Kapok fibre bag

Our kapok fibre bag is soft, lightweight and made from natural plant fibres, which protect your screen from scratches and damage during delivery. It feels gentle to the touch, is safe to handle and is fully compostable; it returns to the earth when its job is done. This bag offers eco-friendly protection during transportation and delivery. Easy to unpack and kind to the planet.

PowerSensor 2



This monitor's PowerSensor 2 feature reduces energy consumption by detecting when users move closer and further away from the screen. After switching the OSD setting to "User", you then need to adjust the settings in Windows 11 for this feature to function properly. When these adjustments are made, the monitor and connected PC/laptop will wake when someone approaches it and sleep when someone walks away, effectively reducing the amount of wake time. The distance for detection can be set to 50, 75 or 120 cm from the user's laptop. Please note that Windows 11 must be installed.

TUV Rheinland Eyesafe - RPF® 40



Philips display meets the TUV Rheinland Eyesafe® standard to truly protect you from long exposure to blue light. The always-on blue light filter not only helps reduce digital eye strain, but also guarantees colour integrity.



USB Docking



PowerSensor



SoftBlue Technology



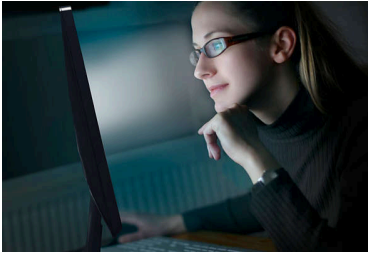
LowBlue Mode



Multiview

Highlights

SoftBlue Technology



SoftBlue LED technology, combined with the monitor's low blue light panel, is an effective solution to reducing the adverse health effects caused by high exposure to blue light. In this monitor's panel, the ratio of light is reduced by nearly 50 percent while the SoftBlue LED technology works simultaneously by reducing harmful blue light rays emitted from the screen. Additionally, the SoftBlue LED technology is

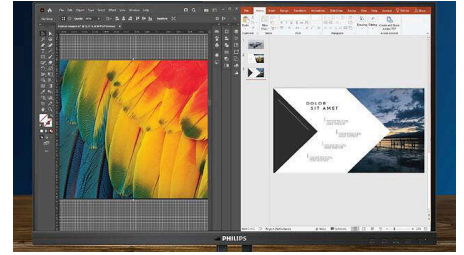
tested and certified by TUV Rheinland Eyesafe for its effectiveness in reducing blue light emissions.

LowBlue Mode and Flicker-free



Our LowBlue Mode and Flicker-free technology have been developed to reduce eye strain and fatigue often caused by long hours in front of a monitor.

MultiView technology



With the ultra-high resolution Philips MultiView display, you can now experience a world of connectivity. MultiView enables active dual connect and view so that you can work with multiple devices like a PC and notebook simultaneously, for complex multitasking.

Specifications

Picture/Display

Panel Size: 27 inch/68.6 cm
 Aspect ratio: 16:9
 LCD panel type: IPS technology
 Backlight type: W-LED system
 Pixel pitch: 0.2331 x 0.2331 mm
 Optimum resolution: 2560 x 1440 @ 60 Hz
 Brightness: 300 cd/m²
 Display colours: 16.7 M (true 8 bits)
 Colour gamut (typical): sRGB% 110%, NTSC 94%*
 Contrast ratio (typical): 1500:1
 SmartContrast: 50,000,000:1
 Response time (typical): 4 ms (Grey to Grey)*
 Viewing angle: 178° (H)/178° (V), @ C/R > 10
 Picture enhancement: SmartImage
 Maximum resolution: 2560 x 1440 @ 100 Hz (HDMI/DP/USBC)
 Effective viewing area: 596.74 (H) x 335.66 (V) mm
 Scanning Frequency: 48-100 kHz (H)/30 -150 Hz (V)
 sRGB
 Flicker-free
 Pixel Density: 109 PPI
 LowBlue Mode
 Display Screen Coating: Anti-Glare, 3H, Haze 25%
 EasyRead
 Adaptive sync

Connectivity

Signal Input: HDMI 2.0 x 1, Display Port 1.4 x 1, USB3.2, Gen2, 10 G Upstream: 1 x USB-C1 (Up to 96 W, DP Alt mode), USB-C2 (data only)
 Sync Input: Separate Sync, Sync on Green
 Audio (In/Out): Audio out
 RJ45: Ethernet LAN (10M/100M/1G/2.5G)
 Signal Output: DP out x 1
 USB:: USB3.2, Gen2, 10 G, Downstream: USB-A x 4 (with x 1 fast charge B.C 1.2), USB-C3 x 1 (data, 15 W)
 HDCP: HDCP 1.4 (HDMI/DP/USB-C), HDCP 2.0 (HDMI/DP/USB-C)
 HBR3

Power Delivery

Max power delivery: up to 96 W, 5 V/3 A, 7 V/3 A, 9 V/3 A, 10 V/3 A, 12 V/3 A, 15 V/3 A, 20 V/3.25 A, 20 V/4 A, 20 V/4.25 A, 20 V/4.8 A.
 Version: USB PD version 3.0

Convenience

Built-in Speakers: 3 W x 2
 Plug and Play Compatibility: DDC/CI, Mac OS, sRGB, Windows 11/10
 User convenience: SmartImage, Input, PowerSensor, Menu, Power On/Off
 OSD Languages: Brazil Portuguese, Czech, Dutch, English, French, Finnish, German, Greek, Hungarian, Italian, Japanese, Korean, Portuguese, Polish, Russian, Simplified Chinese, Spanish, Swedish, Traditional Chinese, Turkish, Ukrainian
 Other convenience: Kensington lock, VESA mount (100 x 100 mm), Earphone hook
 Control software: SmartControl
 MultiView: 2 x devices, PIP/PBP mode

Stand

Height adjustment: 150 mm
 Pivot: +/- 90 degree
 Swivel: +/- 180 degree
 Tilt: -5/30 degree

Power

ECO mode: 12.7 W (typ.)
 Power supply: Built-in, 100–240 VAC, 50–60 Hz
 Off mode: 0.3 W (typ.)
 On mode: 16.02 W (typ.) (Energy Star test method)
 Standby mode: 0.3 W (typ.)
 Power LED indicator: Operation - White, Standby mode - White (flashing)
 Energy Label Class: C

Dimensions

Packaging in mm (W x H x D):
 730 x 445 x 159 mm
 Product without stand (mm): 614 x 368 x 58 mm
 Product with stand (max height):
 614 x 543 x 235 mm

Weight

Product with packaging (kg): 10.29 kg
 Product with stand (kg): 7.19 kg
 Product without stand (kg): 5.43 kg

Operating conditions

Altitude: Operation: +12,000 ft (3658 m), Non-operation: +40,000 ft (12,192 m)
 Temperature range (operation): 0°C to 40°C °C
 Relative humidity: 20%-80 %
 Temperature range (storage): -20°C to 60°C °C
 MTBF (demonstrated): 70,000 hrs (excluded backlight)

Sustainability

Environmental and energy: Energy Star, PowerSensor 2*, LightSensor, EPEAT*, RoHS
 Post-consumer recycled plastic: 85%+OBP 5%
 Recyclable packaging material: 100 %
 Specific Substances: Mercury free, PVC/BFR free housing

Compliance and standards

Regulatory Approvals: CB, CE Mark, TUV/GS, TUV Ergo, TCO Certified, EAC, EAEU RoHS, UKCA, EMF, FCC, ICES-003, eyesafe® CERTIFIED 2.0, TÜV Rheinland Low Blue Light (Hardware Solution)

Cabinet

Finish: Texture
 Foot: Silver
 Front bezel: Charcoal
 Rear cover: Charcoal

What's in the box?

Cables: HDMI cable, DP cable, Audio cable, USB-C to C/C cable, Power cable
 Monitor with stand
 User Documentation



* "IPS" word mark / trademark and related patents on technologies belong to their respective owners.
 * The maximum resolution works for either HDMI input or DP input.
 * Response time value equal to SmartResponse
 * sRGB Area based on CIE1931, NTSC Area based on CIE1976.
 * Please note that the PowerSensor 2 is only functional with Windows 11 installed. When PowerSensor 2 is activated, WAL means Walk Away Lock and WOA means Wake On.
 * Fast charging complies with USB BC 1.2 standard
 * EPEAT rating is valid only where Philips registers the product. Please visit <https://www.epeat.net/> for registration status in your country.
 * The 5 year warranty is a voluntary manufacturer's limited warranty. It applies only in the countries listed on this page <https://www.philips.co.uk/c-e/so/monitors/tco-certified-edge>. For consumers, it is provided in addition to, and without affecting, their legal rights under applicable national laws. For non-consumer (business/professional) end users, only the manufacturer's limited warranty terms apply.
 * The monitor may look different from feature images.
 * The products and accessories listed on this leaflet may differ by country and region.