

PHILIPS

Full HD LCD display

Monitor

1000 series

27" (68.6 cm)

1920 x 1080 (Full HD)

27E1N1300AE



Improve your productivity with USB-C connectivity

This monitor is made to keep you connected. With features like USB-C 3.2 with power delivery, users can charge their linked device and work seamlessly, all with one cable. In addition, the singular cable makes for a clean workspace.

Features designed for you

- SoftBlue Technology: for comfortable viewing
- EasySelect menu toggle key for quick on-screen menu access
- EasyRead mode for a paper-like reading experience
- Height-adjustable for better ergonomic comfort
- Cable management reduces cable clutter for a neat workspace

Easy to experience

- Connect your notebook with one USB-C cable
- Built-in stereo speakers for multimedia
- VESA mount for convenience
- HDMI ensures universal digital connectivity

Good for Gaming

- 120 Hz refresh rates for ultra-smooth, brilliant images

Superb Picture Quality

- 16:9 Full HD display for crisp, detailed images

Monitor

Full HD LCD display

27E1N1300AE/00

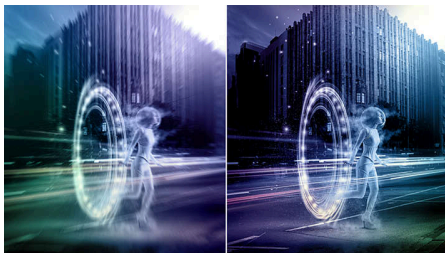
Highlights

120 Hz Gaming



You play intense, competitive games. You demand a display with lag-free, ultra-smooth images. This Philips display redraws the screen image up to 120 times per second, effectively faster than a standard display. A lower frame rate can make enemies appear to jump from spot to spot on the screen, making them difficult targets to hit. With 120 Hz frame rate, you get those critical missing images on the screen, showing enemy movement in ultra-smooth motion so you can easily target them. With ultra-low input lag and no screen tearing, this Philips display is your perfect gaming partner.

1 ms MPRT fast response



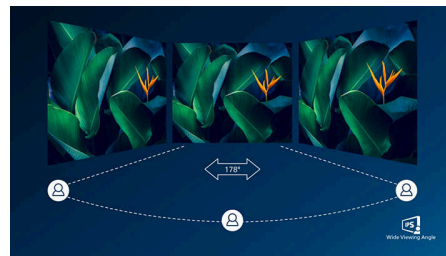
MPRT (motion picture response time) is a more intuitive way to describe response time, which directly refers to the duration between seeing blurry noise and clean, crisp images. The Philips gaming monitor with 1 ms MPRT effectively eliminates smearing and motion blur and delivers sharper and more precise visuals to enhance your gaming experience. The best choice for playing thrilling and twitch-sensitive games.

USB-C connection



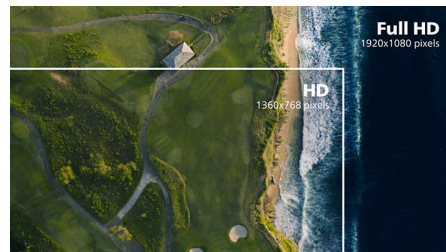
This Philips display features a USB type-C connector with power delivery. With intelligent and flexible power management, you can power charge your compatible device directly. Its slim, reversible USB-C allows for easy, one-cable connection. You can watch high-resolution video and transfer data at super speed, while powering up and recharging your compatible device at the same time.

IPS technology



IPS displays use an advanced technology that gives you extra-wide viewing angles of 178/178 degrees, making it possible to view the display from almost any angle. Unlike standard TN panels, IPS displays give you remarkably crisp images with vivid colours, making them ideal not only for Photos, movies and web browsing, but also for professional applications that demand colour accuracy and consistent brightness at all times.

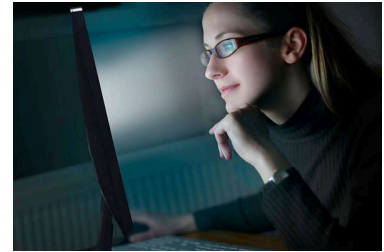
16:9 Full HD display



Picture quality matters. Regular displays deliver quality, but you expect more. This display features enhanced Full HD 1920 x 1080

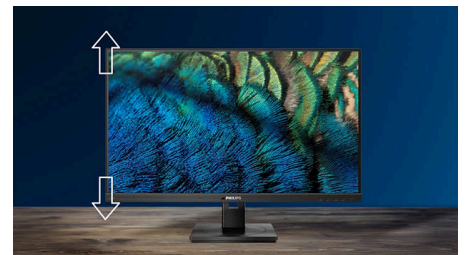
resolution. With Full HD for crisp detail paired with high brightness, incredible contrast and realistic colours, expect a true-to-life picture.

SoftBlue Technology



SoftBlue LED technology, combined with the monitor's low blue light panel, is an effective solution to reducing the adverse health effects caused by high exposure to blue light. In this monitor's panel, the ratio of light is reduced by nearly 50% while the SoftBlue LED technology works simultaneously by reducing harmful blue light rays emitted from the screen.

Height-adjustable Ergo Base



The height-adjustable Ergo Base is a 'people-friendly' Philips monitor base that not only tilts, but is also height adjustable, so that each user can adjust the monitor to their personal preference for maximum viewing comfort and efficiency.

EasyRead mode



EasyRead mode for a paper-like reading experience



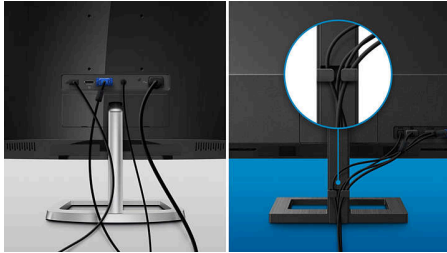
Monitor

Full HD LCD display

27E1N1300AE/00

Highlights

Cable management



Cable management is an intimate design that maintains a tidy workspace by organising the cables and wires required for the operation of a display device.

EasySelect Menu Toggle Key



The discreetly placed EasySelect Menu Toggle Key allows you to make quick and easy adjustments to monitor settings in the On-Screen Display menu.

Built-in stereo speakers



A pair of high-quality stereo speakers built into a display device. They may be visible front firing, or invisible down firing, top firing, rear firing etc. depending on model and design.



Built-in Speaker

Monitor

Full HD LCD display

27E1N1300AE/00

Specifications

Picture/Display

Panel Size: 27 inch/68.6 cm
Aspect ratio: 16:9
LCD panel type: IPS technology
Backlight type: W-LED system
Pixel pitch: 0.3114 x 0.3114 mm
Brightness: 300 cd/m²
Display colours: 16.7 M
Contrast ratio (typical): 1500:1
SmartContrast: Mega Infinity DCR
Response time (typical): 4 ms (Grey to Grey)*
Viewing angle: 178° (H)/178° (V), @ C/R > 10
Picture enhancement: SmartImage game
Maximum resolution: 1920 x 1080 @ 120 Hz
Effective viewing area: 597.89 (H) x 336.31 (V)
Scanning Frequency: 30 kHz–140 kHz (H)/48 Hz–120 Hz (V)
sRGB
SoftBlue
Flicker-free
Pixel Density: 81.59 PPI
LowBlue Mode
Display Screen Coating: Anti-Glare, 3H, Haze 25%
MPRT: 1 ms
EasyRead
Adaptive sync

Connectivity

Signal Input: HDMI 1.4 x 1, USB-C x 1 (DisplayPort Alt mode, data and Power Delivery)
Sync Input: Separate Sync
Audio (In/Out): Audio out
HDCP: HDCP 1.4 (HDMI/USB-C)
USB Hub: USB 3.2 Gen 1, USB-A downstream x 2 (with 1 fast-charge B.C 1.2)

Power Delivery

Max power delivery: USB-C: Up to 65 W (5 V/3 A, 7 V/3 A, 9 V/3 A, 10 V/3 A, 12 V/3 A, 15 V/3 A, 20 V/3.25 A)
Version: USB PD version 3.0

Convenience

Built-in Speakers: 2 W x 2
Plug and Play Compatibility: DDC/CI, Mac OS X, sRGB, Windows 11/10
User convenience: Power On/Off, Menu, Volume, Input, SmartImage Game
OSD Languages: Brazil Portuguese, Czech, Dutch, English, Finnish, French, German, Greek,

Hungarian, Italian, Japanese, Korean, Polish, Portuguese, Russian, Simplified Chinese, Spanish, Swedish, Traditional Chinese, Turkish, Ukrainian
Other convenience: Kensington lock, VESA mount (100 x 100 mm)

Stand

Height adjustment: 100 mm
Tilt: -5/20 degree

Power

Power supply: Internal, 100–240 VAC, 50–60 Hz
Off mode: 0.3 W (typ.)
On mode: 18.8 W (typ.)
Standby mode: 0.5 W (typ.)
Power LED indicator: Operation - White, Standby mode - White (flashing)
Energy Label Class: E

Dimensions

Packaging in mm (W x H x D):
780 x 420 x 161 mm
Product without stand (mm): 617 x 357 x 46 mm
Product with stand (max height):
617 x 483 x 220 mm

Weight

Product with packaging (kg): 8.97 kg
Product with stand (kg): 5.85 kg
Product without stand (kg): 4.07 kg

Operating conditions

Altitude: Operation: +12,000 ft (3658 m), Non-operation: +40,000 ft (12,192 m)
Temperature range (operation): 0 to 40 °C
MTBF: 50,000 hrs (excluding backlight) hour(s)
Relative humidity: 20%-80 %
Temperature range (storage): -20 to 60 °C

Sustainability

Environmental and energy: RoHS
Recyclable packaging material: 100 %
Specific Substances: Mercury free, PVC/BFR free housing

Compliance and standards

Regulatory Approvals: CB, CE Mark, ICES-003, TUV/ISO9241-307, TUV-BAUART, EAC, FCC, VCCI, Energy Star 8.0, EPA

Cabinet

Colour: Black
Finish: Textured

What's in the box?

Cables: HDMI cable, USB-C to USB-C cable, Power cable

Monitor with stand
User Documentation



- * "IPS" word mark / trademark and related patents on technologies belong to their respective owners.
- * The maximum resolution works for HDMI input only.
- * For best output performance, please always ensure that your graphic card is capable of achieving the maximum resolution and refresh rate of this Philips display.
- * Response time value equal to SmartResponse
- * MPRT adjusts the brightness for blur reduction, so the brightness cannot be adjusted while MPRT is turned on. To reduce motion blur, the LED backlight will strobe in time with the screen refresh rate, which may cause a noticeable change in brightness.
- * MPRT is a gaming-optimised mode. Turning on MPRT may cause noticeable screen flickering. It is recommended to turn this mode off when you are not using the gaming function.
- * For USB-C power and charging function, your Notebook/device must support USB-C standard Power Delivery specifications. Please check with your Notebook user manual or manufacturer for more details.
- * For Video transmission via USB-C, your Notebook/device must support USB-C DP Alt mode
- * The products and accessories listed on this leaflet may differ by country and region.
- * The monitor may look different from feature images.