

PHILIPS

EVNIA

Full HD gaming
monitor

Curved Fast VA Gaming
monitor

Evnia 5000

27" (68.5 cm)

1920 x 1080 (Full HD)

27M2C5200W



Your gaming experience to the utmost

This Fast VA monitor is made for gamers with a need for speed. Its 280 Hz refresh rate and 0.3 ms Smart MBR make this monitor the ideal enabler for spotting targets and running through scenarios.

Features designed for gamers' needs

- SmartImage game mode optimised for gamers
- Tilt, swivel and height-adjust for an ideal viewing position
- LowBlue mode and Flicker-free easy-on-the eyes viewing
- EasySelect menu toggle key for quick on-screen menu access
- Smart Crosshair: for better aim and more fun

Built for fast action

- 0.3 ms ultra-fast speed for crisp image and smooth gameplay
- Fast VA Panel: For sharp imagery at high frame rates
- Low input lag reduces time delay between devices to monitor
- 280 Hz trail-blazing refresh rate for smooth gameplay

Immersive visuals

- 16:9 Full HD display for crisp, detailed images
- High Dynamic Range (HDR) for more lifelike colourful visuals
- SmartContrast for rich black details

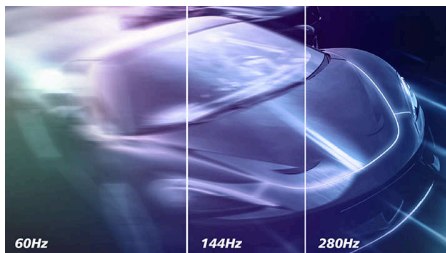
Curved Fast VA Gaming monitor

Full HD gaming monitor

27M2C5200W/00

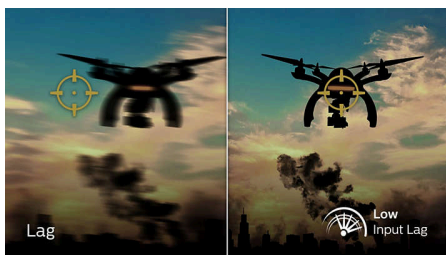
Highlights

Accelerated 280 Hz refresh rate



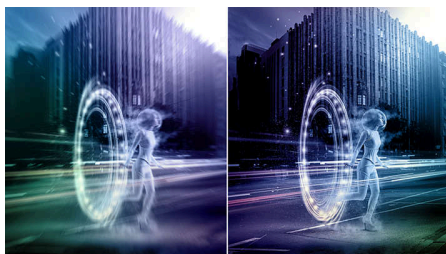
The Philips Evnia 280 Hz display takes your gaming experience to new dimensions. The low input lag coupled with variable refresh rate technology gives you an immersive gaming advantage. Plus, our wide-view angle panel with high resolution provides a realistic gaming experience with unsurpassed colour accuracy. Focus on what matters as the adjustable stand gives you the comfort you deserve and flicker-free technology makes for a viewing experience that is easy on the eyes, so you can continue gaming without health worries.

Low input lag



Input lag is the amount of time that elapses between performing an action with connected devices and seeing the result on screen. Low input lag reduces the time delay between entering a command from your devices to monitor, greatly improving play on twitch-sensitive video games, particularly important for playing fast-paced, competitive games.

0.3 ms Smart MBR fast response



The Philips display with 0.3 ms Smart MBR effectively eliminates smearing and motion blur, and delivers sharper and more precise visuals to

enhance your gaming experience. Fast-moving action and dramatic transitions will be rendered smoothly. The best choice for playing thrilling and movement-sensitive games.

Fast VA



This feature is made for action-packed gameplay. Not only does it produce virtually blur-free gaming, but it also pairs well with high frame rates for the best and sharpest imagery, guaranteed.

Curved display design



Desktop monitors offer a personal user experience, which suits a curved design very well. The curved screen provides a pleasant yet subtle immersion effect, which focuses on you at the centre of your desk.

16:9 Full HD display



Picture quality matters. Regular displays deliver quality, but you expect more. This display features enhanced Full HD 1920 x 1080 resolution. With Full HD for crisp detail paired with high brightness, incredible contrast and realistic colours, expect a true-to-life picture.

High Dynamic Range (HDR)



High Dynamic Range delivers a dramatically different visual experience. With astonishing brightness, incomparable contrast and captivating colour, images come to life with much greater brightness while also featuring much deeper, more nuanced darks. It renders a fuller palette of rich new colours never before seen on a display, giving you a visual experience that engages your senses and inspires emotions.

SmartContrast



SmartContrast is a Philips technology that analyses the contents you are displaying, automatically adjusting colours and controlling backlight intensity to dynamically enhance contrast for the best digital images and videos or when playing games where dark hues are displayed. When Economy mode is selected, contrast is adjusted and backlighting fine-tuned for just-right display of everyday office applications and lower power consumption.



Curved Fast VA Gaming monitor

Full HD gaming monitor

27M2C5200W/00

Highlights

LowBlue mode and Flicker-free



Our LowBlue Mode and Flicker-free technology have been developed to reduce eye strain and fatigue often caused by long hours in front of a monitor.

SmartImage Game mode



The new Philips gaming display has quick-access OSD fine-tuned for gamers, offering you multiple options. "FPS" mode (First person shooting) improves dark themes in games, allowing you to see hidden objects in dark areas. "Racing" mode adapts the display with the fastest response time

and high colour, along with image adjustments. "RTS" mode (Real-time strategy) has a special SmartFrame mode that enables highlighting of specific area and allows for size and image adjustments. Gamer 1 and Gamer 2 enable you to save personal customised settings based on different games, ensuring best performance.

Compact Ergo Base



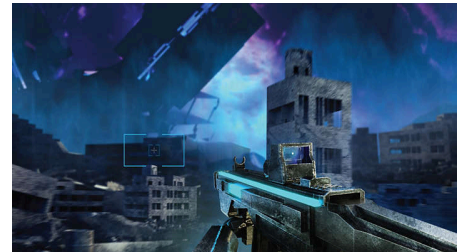
The Compact Ergo Base is a people-friendly Philips monitor base that tilts, swivels and height-adjusts so each user can position the monitor for maximum viewing comfort and efficiency.

EasySelect Menu Toggle Key



The discreetly placed EasySelect Menu Toggle Key allows you to make quick and easy adjustments to monitor settings in the On-Screen Display menu.

Smart Crosshair



Colour of Crosshair is set by default. When Smart Crosshair is on, the colour will change as a complementary colour to the background colour. Smart Crosshair enhances the aiming accuracy so you can spot the enemies more easily.



Curved Fast VA Gaming monitor

Full HD gaming monitor

27M2C5200W/00

Specifications

Picture/Display

Panel Size: 27 inch/68.5 cm
Aspect ratio: 16:9
LCD panel type: Fast VA
Backlight type: W-LED system
Pixel pitch: 0.3114 x 0.3114 mm
Brightness: 300 cd/m²
Display colours: 1.07 B (10 bits)*
Colour gamut (typical): DCI-P3:92%, sRGB: 121%, NTSC 108%, Adobe RGB 105%*
Contrast ratio (typical): 4000:1
SmartContrast: Mega Infinity DCR
Response time (typical): 1 ms (Grey to Grey)*
Viewing angle: 178° (H)/178° (V), @ C/R > 10
Picture enhancement: SmartImage game
Maximum resolution: HDMI: 1920 x 1080 @ 240 Hz, DP: 1920 x 1080 @ 280 Hz
Effective viewing area: 597.888 (H) x 336.312 (V) - at a 1500 R curvature*
Scanning Frequency: HDMI: 30–280 kHz (H)/48–240 Hz (V), DP: 30–320 kHz (H)/48–280 Hz (V)
sRGB
Delta E: < 2 (sRGB)
Flicker-free
Pixel Density: 81.68 PPI
LowBlue Mode
Display Screen Coating: Anti-glare, 25%, 3H
SmartUniformity: 93 ~ 105%
Low Input Lag
EasyRead
Adaptive sync
HDR: HDR 10 supported
Smart Crosshair
Shadow Boost
Smart MBR: 0.3 ms*

Connectivity

Signal Input: HDMI 2.0 x 2, DisplayPort 1.4 x 1
Sync Input: Separate Sync
Audio (In/Out): Headphone out
HDCP: HDCP 1.4 (HDMI/DisplayPort), HDCP 2.2 (HDMI/DisplayPort)

Convenience

Plug and Play Compatibility: DDC/CI, Mac OS X, sRGB, Windows 11/10
User convenience: Power On/Off, Menu/OK, Input/Up, Game Settings/Down, SmartImage game/Back
OSD Languages: Brazil Portuguese, Czech, Dutch, English, Finnish, French, German, Greek,

Hungarian, Italian, Japanese, Korean, Polish, Portuguese, Russian, Spanish, Simplified Chinese, Swedish, Turkish, Traditional Chinese, Ukrainian
Other convenience: Kensington lock, VESA mount (100 x 100 mm), LowBlue Mode

Stand

Height adjustment: 130 mm
Swivel: -/+30 degree
Tilt: -5/20 degree

Power

Power supply: Internal, 100–240 VAC, 50–60 Hz
Off mode: 0.3 W (typ.)
On mode: 22.4 W (typ.)
Standby mode: 0.5 W (typ.)
Power LED indicator: Operation - White, Standby mode - White (flashing)
Energy Label Class: E

Dimensions

Packaging in mm (W x H x D): 785 x 480 x 188 mm
Product without stand (mm): 611 x 369 x 90 mm
Product with stand (max height): 611 x 528 x 247 mm

Weight

Product with packaging (kg): 9.15 kg
Product with stand (kg): 5.79 kg
Product without stand (kg): 3.97 kg

Operating conditions

Altitude: Operation: +12,000 ft (3658 m), Non-operation: +40,000 ft (12,192 m)
Temperature range (operation): 0°C to 40 °C
MTBF: 30,000 (Excluded backlight) hour(s)
Relative humidity: 20%-80 %
Temperature range (storage): -20°C to 60 °C

Sustainability

Environmental and energy: RoHS
Recyclable packaging material: 100 %
Post-consumer recycled plastics: 85%*

Compliance and standards

Regulatory Approvals: CB, TUV/ISO9241-307, TUV-BAUART, EAC, EAEU RoHS, CE Mark, UKCA, EMF, FCC, ICES-003

Cabinet

Colour: Dark Slate
Finish: Textured

What's in the box?

Cables: HDMI cable, DisplayPort cable, Power cable

Monitor with stand

User Documentation



* Radius of the arc of the display curvature in mm
* For best output performance, please always ensure that your graphic card is capable of achieving the maximum resolution and refresh rate of this Philips display.
* 10 bits can only be reached by DP @ 240 Hz.
* Response time value equal to SmartResponse
* Smart MBR adjusts brightness for blur reduction, so you cannot adjust brightness while Smart MBR is turned on. To reduce motion blur, the LED backlight will strobe synchronously with each screen refresh, which may cause a noticeable change in brightness.
* Smart MBR is a gaming-optimised mode. Turning on Smart MBR may cause noticeable screen flickering. We recommended turning it off when you are not using the gaming function.
* DCI-P3 Coverage based on CIE1976, sRGB Area based on CIE1931, NTSC Area and Adobe RGB Area based on CIE1976.
* This monitor strives for sustainability: the stand's feet and headphone holder are made with 35% recycled plastic and monitor's chassis is made up of 85% post-consumer recycled plastic.
* The products and accessories listed on this leaflet may differ by country and region.
* The monitor may look different from feature images.