

# PHILIPS

## EVNIA

Full HD gaming  
monitor

Fast IPS Gaming monitor

Evnia 3000

27" (68.5 cm)

1920 x 1080 (Full HD)

27M2N3200S



## Broaden your gaming horizon

This monitor allows you to game with ultimate precision and speed at 180 Hz. With sharp HDR-quality imagery and Full HD resolution guaranteed, this monitor produces an excellent all-around gaming experience.

### Features designed for gamers' needs

- LowBlue mode and Flicker-free easy-on-the eyes viewing
- SmartImage game mode optimised for gamers
- Built-in stereo speakers for multimedia
- EasySelect menu toggle key for quick on-screen menu access
- Smart Crosshair: for better aim and more fun

### Built for fast action

- 180 Hz refresh rates for ultra-smooth, brilliant images
- 0.5 ms ultra-fast speed for crisp images and smooth gameplay
- Low input lag reduces time delay between devices to monitor
- Fast IPS Panel: For rapid and crystal-clear gaming

### Immersive visuals

- 16:9 Full HD display for crisp, detailed images
- High Dynamic Range (HDR) for more lifelike colourful visuals
- SmartContrast for rich black details

# Fast IPS Gaming monitor

Full HD gaming monitor

27M2N3200S/00

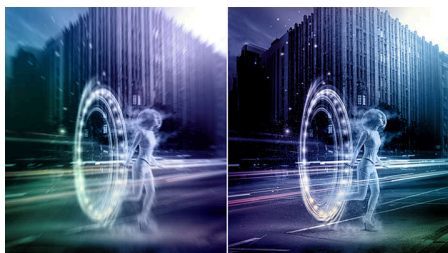
## Highlights

### 180 Hz Gaming



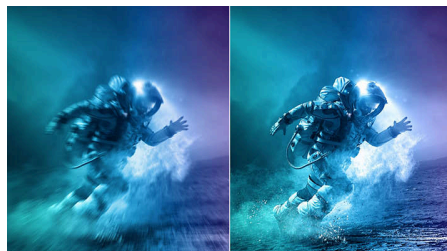
You play intense, competitive gaming. You demand display with lag-free, ultra-smooth images. This display redraws the screen image up to 180 times per second, effectively faster than a standard display. A lower frame rate can make enemies appear to jump from spot to spot on the screen, making them difficult targets to hit. With a 180 Hz frame rate, you get those critical missing images on the screen which show enemy movement in ultra-smooth motion so you can easily target enemies. With ultra-low input lag and no screen tearing, this Philips display is your perfect gaming partner.

### 0.5 ms Smart MBR fast response



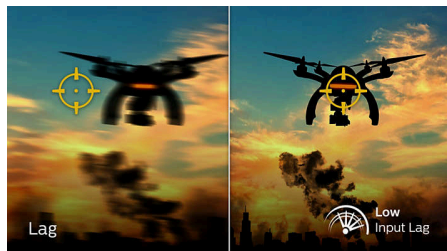
The Philips Evnia with 0.5 ms Smart MBR effectively eliminates smearing and motion blur, and delivers sharper and more precise visuals to enhance your gaming experience. Fast-moving action and dramatic transitions will be rendered smoothly. It's the best choice for playing thrilling and twitch-sensitive games.

### Fast IPS



This feature is made for action-packed gameplay. Not only does it produce virtually blur-free gaming, but it also pairs well with high frame rates for the best and sharpest imagery, guaranteed.

### Low Input Lag



Input lag is the amount of time that elapses between performing an action with connected devices and seeing the result on screen. Low input lag reduces the time delay between entering a command from your devices to monitor, greatly improving play on twitch-sensitive video games, particularly important for playing fast-paced, competitive games.

### 16:9 Full HD display



Picture quality matters. Regular displays deliver quality, but you expect more. This display features enhanced Full HD 1920 x 1080

resolution. With Full HD for crisp detail paired with high brightness, incredible contrast and realistic colours, expect a true-to-life picture.

### High Dynamic Range (HDR)



High Dynamic Range delivers a dramatically different visual experience. With astonishing brightness, incomparable contrast and captivating colour, images come to life with much greater brightness while also featuring much deeper, more nuanced darks. It renders a fuller palette of rich new colours never before seen on a display, giving you a visual experience that engages your senses and inspires emotions.

### SmartContrast



SmartContrast is a Philips technology that analyses the contents you are displaying, automatically adjusting colours and controlling backlight intensity to dynamically enhance contrast for the best digital images and videos or when playing games where dark hues are displayed. When Economy mode is selected, contrast is adjusted and backlighting fine-tuned for just-right display of everyday office applications and lower power consumption.



# Fast IPS Gaming monitor

Full HD gaming monitor

27M2N3200S/00

## Highlights

### LowBlue Mode and Flicker-free



Our LowBlue Mode and Flicker-free technology have been developed to reduce eye strain and fatigue often caused by long hours in front of a monitor.

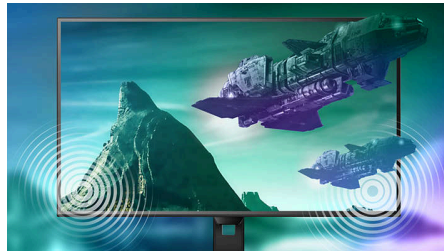
### SmartImage Game mode



The new Philips gaming display has quick-access OSD fine-tuned for gamers, offering you multiple options. "FPS" mode (First person shooting) improves dark themes in games, allowing you to see hidden objects in dark areas. "Racing" mode adapts the display with the fastest response time

and high colour, along with image adjustments. "RTS" mode (Real-time strategy) has a special SmartFrame mode that enables highlighting of specific area and allows for size and image adjustments. Gamer 1 and Gamer 2 enable you to save personal customised settings based on different games, ensuring best performance.

### Built-in stereo speakers



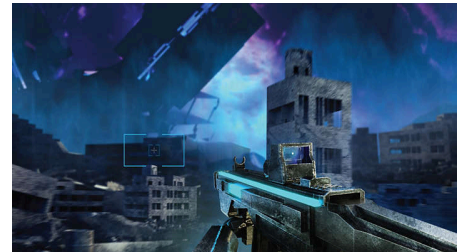
A pair of high-quality stereo speakers built into a display device. They may be visible front firing, or invisible down firing, top firing, rear firing etc. depending on model and design.

### EasySelect Menu Toggle Key



The discreetly placed EasySelect Menu Toggle Key allows you to make quick and easy adjustments to monitor settings in the On-Screen Display menu.

### Smart Crosshair



Colour of Crosshair is set by default. When Smart Crosshair is on, the colour will change as a complementary colour to the background colour. Smart Crosshair enhances the aiming accuracy so you can spot the enemies more easily.



EasySelect

Flicker-free

# Fast IPS Gaming monitor

Full HD gaming monitor

27M2N3200S/00

## Specifications

### Picture/Display

**Panel Size:** 27 inch/68.5 cm  
**Aspect ratio:** 16:9  
**LCD panel type:** Fast IPS  
**Backlight type:** W-LED system  
**Pixel pitch:** 0.31125 x 0.31125 mm  
**Brightness:** 300 cd/m<sup>2</sup>  
**Display colours:** 16.7 M (8 bits)  
**Colour gamut (typical):** DCI-P3:95%\*, sRGB 128%\*, AdobeRGB 90%\*  
**Contrast ratio (typical):** 1000:1  
**SmartContrast:** Mega Infinity DCR  
**Response time (typical):** 1 ms (Grey to Grey)\*  
**Viewing angle:** 178° (H)/178° (V), @ C/R > 10  
**Picture enhancement:** SmartImage game  
**Maximum resolution:** 1920 x 1080 @ 180 Hz  
**Effective viewing area:** 597.6 (H) x 336.15 (V) mm  
**Scanning Frequency:** 30k - 200 kHz (H)/48 - 180 Hz (V)  
**sRGB**  
**Flicker-free**  
**Pixel Density:** 81.59 PPI  
**LowBlue Mode**  
**Display Screen Coating:** Anti-Glare, 3H, Haze 25%  
**EasyRead**  
**HDR:** HDR 10 supported  
**Smart Crosshair**  
**Shadow Boost:** Yed  
**Smart MBR:** 0.5 ms\*

### Connectivity

**Signal Input:** HDMI 2.0 x 2, DisplayPort 1.4 x 1  
**Sync Input:** Separate Sync  
**Audio (In/Out):** Audio out  
**HDCP:** HDCP 1.4 (HDMI/DP), HDCP 2.2 (HDMI/DP)

### Convenience

**Built-in Speakers:** 2 W x 2  
**Plug and Play Compatibility:** DDC/CI, Mac OS X, sRGB, Windows 11/10  
**User convenience:** Power On/Off, Menu/OK, Input/Up, Game Settings/Down, SmartImage game/Back  
**OSD Languages:** Brazil Portuguese, Czech, Dutch, English, Finnish, French, German, Greek, Hungarian, Italian, Japanese, Korean, Polish, Portuguese, Russian, Spanish, Simplified Chinese,

Swedish, Turkish, Traditional Chinese, Ukrainian  
**Other convenience:** Kensington lock, VESA mount (100 x 100 mm), LowBlue Mode

### Stand

**Tilt:** -5/20 degree

### Power

**Power supply:** Internal, 100–240 VAC, 50–60 Hz  
**Off mode:** 0.3 W (typ.)  
**On mode:** 27.4 W (typ.)  
**Standby mode:** 0.5 W (typ.)  
**Power LED indicator:** Operation - White, Standby mode - White (flashing)  
**Energy Label Class:** E

### Dimensions

**Packaging in mm (W x H x D):**  
690 x 420 x 141 mm  
**Product without stand (mm):** 615 x 369 x 61 mm  
**Product with stand (max height):**  
615 x 463 x 196 mm

### Weight

**Product with packaging (kg):** 7.25 kg  
**Product with stand (kg):** 4.71 kg  
**Product without stand (kg):** 4.10 kg

### Operating conditions

**Altitude:** Operation: +12,000 ft (3658 m), Non-operation: +40,000 ft (12,192 m)  
**Temperature range (operation):** 0°C to 40 °C  
**MTBF:** 50,000 (Excluded backlight) hour(s)  
**Relative humidity:** 20%-80 %  
**Temperature range (storage):** -20°C to 60 °C

### Sustainability

**Environmental and energy:** RoHS  
**Recyclable packaging material:** 100 %  
**Specific Substances:** Mercury free, PVC/BFR free housing  
**Post-consumer recycled plastics:** 85%\*

### Compliance and standards

**Regulatory Approvals:** CB, TUV/ISO9241-307, TUV-BAUART, EAC, EAEU RoHS, MEPS, KC, BSMI, CE Mark, UKCA, EMF, FCC, ICES-003

### Cabinet

**Colour:** Charcoal  
**Finish:** Textured

### What's in the box?

**Cables:** HDMI cable, DisplayPort cable, Power cable  
**Monitor with stand**  
**User Documentation**



\* The maximum resolution works for either HDMI input or DP input.

\* For best output performance, please always ensure that your graphic card is capable of achieving the maximum resolution and refresh rate of this Philips display.

\* Response time value equal to SmartResponse

\* Smart MBR adjusts brightness for blur reduction, so you cannot adjust brightness while Smart MBR is turned on. To reduce motion blur, the LED backlight will strobe synchronously with each screen refresh, which may cause a noticeable change in brightness.

\* Smart MBR is a gaming-optimised mode. Turning on Smart MBR may cause noticeable screen flickering. We recommend turning it off when you are not using the gaming function.

\* sRGB Area based on CIE1931

\* Adobe RGB and DCI-P Coverage based on CIE1976

\* This monitor strives for sustainability: the stand's feet are made with 35% recycled plastic and the monitor's chassis is made up of 85% post-consumer recycled plastic.

\* The monitor may look different from feature images.