

PHILIPS

UltraWide LCD
monitor with USB-C

Business Monitor

5000 series

40 (39.53" / 100.4 cm diag.)

3440 x 1440 (WQHD)

40B1U5600



Beyond well-equipped

This Philips USB-C multi-purpose monitor offers clutter-free setup. With a single cable you can view smooth, high-resolution video, transfer data and charge your laptop. The headphone holder brings cable management to the next level.

Superb Picture Quality

- IPS LED wide view technology for image and colour accuracy
- CrystalClear images with UltraWide QHD 3440 x 1440 pixels
- DisplayHDR 400 for more lifelike and outstanding visuals

Designed for the way you work

- Built-in stereo speakers for multimedia
- Tilt, swivel and height-adjust for an ideal viewing position
- Earphone hook: Accessory within reach

Optimal Connectivity

- Built-in KVM switch to easily switch between sources
- Connect your notebook with one USB-C cable
- USB 3.2 high-speed data transfer

Designed for sustainability

- LightSensor for the perfect brightness with minimal power
- PowerSensor saves up to 75% energy costs

Business Monitor

UltraWide LCD monitor with USB-C

40B1U5600/00

Highlights

USB-C connection



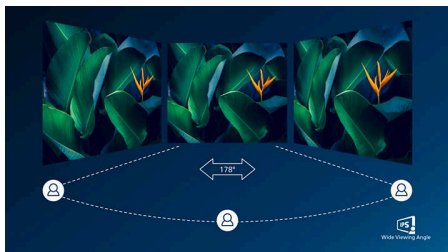
This Philips display features a USB type-C connector with power delivery. With intelligent and flexible power management, you can power charge your compatible device directly. Its slim, reversible USB-C allows for easy, one-cable connection. You can watch high-resolution video and transfer data at super speed, while powering up and recharging your compatible device at the same time.

MultiClient Integrated KVM



With the MultiClient Integrated KVM switch, you can control two separate PCs with one monitor-keyboard-mouse setup. A convenient button allows you to quickly switch between sources. Handy with setups that require dual PC computing power or sharing one large monitor to show two different PCs.

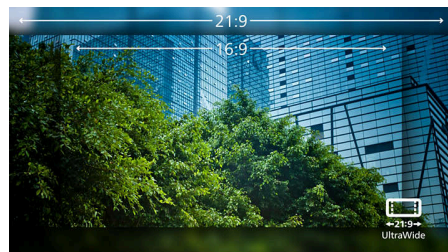
IPS technology



IPS displays use an advanced technology that gives you extra-wide viewing angles of 178/178 degrees, making it possible to view the

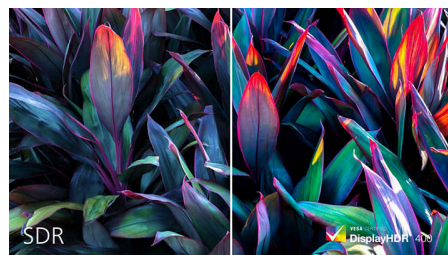
display from almost any angle. Unlike standard TN panels, IPS displays give you remarkably crisp images with vivid colours, making them ideal not only for Photos, movies and web browsing, but also for professional applications that demand colour accuracy and consistent brightness at all times.

UltraWide CrystalClear images



These Philips screens deliver Crystal Clear, UltraWide Quad HD 3440 x 1440 pixel images. Utilising high-performance panels with high-density pixel count and 178/178 wide viewing angles, these new displays will make your images and graphics come alive. The UltraWide 21:9 format enables more productivity with more room for side-by-side comparisons and more viewable spreadsheet columns. Whether you are a demanding professional requiring extremely detailed information for CAD-CAM solutions or a financial wizard working on huge spreadsheets, Philips displays deliver Crystal Clear images.

DisplayHDR 400



VESA-certified DisplayHDR 400 delivers a significant step up from normal SDR displays. Unlike other 'HDR-compatible' screens, true DisplayHDR 400 produces astonishing brightness, contrast and colours. With global dimming and minimum 400 nits of brightness, images come to life with notable highlights while featuring deeper, more nuanced blacks. It

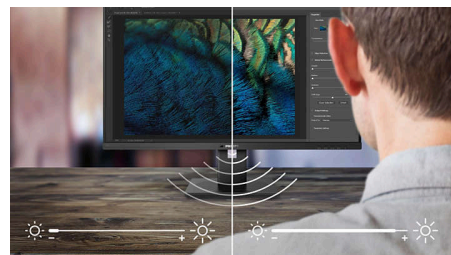
renders a fuller palette of rich new colours, delivering a visual experience that engages your senses.

Built-in stereo speakers



A pair of high-quality stereo speakers built into a display device. They may be visible front firing, or invisible down firing, top firing, rear firing etc. depending on model and design.

PowerSensor



PowerSensor is a built-in "people sensor" that transmits and receives harmless infra-red signals to determine if the user is present and automatically reduces monitor brightness when the user steps away from the desk, cutting energy costs by up to 75 percent and prolonging monitor life.



MultiClient Integrated KVM



Wide Viewing Angle



WQHD



VESA DisplayHDR 400



Built-in Speaker



CompactErgo Base



LightSensor



Wide Viewing Angle

Business Monitor

UltraWide LCD monitor with USB-C

40B1U5600/00

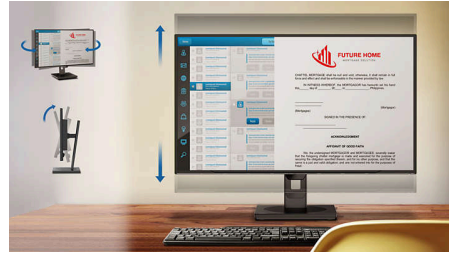
Highlights

Earphone hook



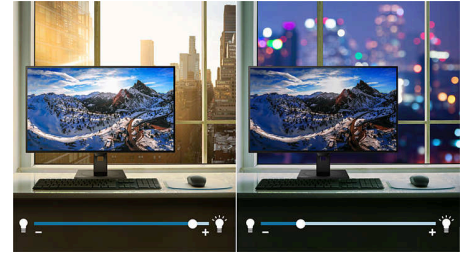
The unique design of the headphone hook on the side of the Philips monitor brings the tidiness and cable management of your working station to the next level. Its easy access lets you put aside your headphones easily, making sure that all of the accessories you need are within reach.

Compact Ergo Base



The Compact Ergo Base is a people-friendly Philips monitor base that tilts, swivels and height-adjusts so each user can position the monitor for maximum viewing comfort and efficiency.

LightSensor



LightSensor uses a smart sensor to adjust the picture brightness depending on the light conditions in the room for the perfect picture with minimal power usage.



Multiview

Specifications

Picture/Display

Panel Size: 40 inch
Viewable Size: 39.53 inch/100.4 cm
Aspect ratio: 21:9
LCD panel type: IPS technology
Backlight type: W-LED system
Pixel pitch: 0.26925 x 0.26925 mm
Brightness: 500 cd/m²
Display colours: 16.7 M (8 bit)
Colour gamut (typical): NTSC 102%*, sRGB 121%*
Contrast ratio (typical): 1200:1
SmartContrast: 50,000,000:1
Response time (typical): 4 ms (Grey to Grey)*
Viewing angle: 178° (H)/178° (V), @ C/R > 10
Picture enhancement: SmartImage
Maximum resolution: HDMI: 3440 x 1440 @ 100 Hz, DP/USB-C: 3440 x 1440 @ 120 Hz
Effective viewing area: 926.22 (H) x 387.72 (V)
Scanning Frequency: HDMI: 30 - 160 kHz (H) / 48 - 100 Hz (V); DP/USB-C: 30 - 190 kHz (H) / 48 - 120 Hz (V)
sRGB
Delta E: < 2
Flicker-free
Pixel Density: 94 PPI
LowBlue Mode
Display Screen Coating: Anti-Glare, 3H, Haze 25%
SmartUniformity: 93 ~ 105%
EasyRead
Adaptive sync
HDR: DisplayHDR 400 certified

Connectivity

Signal Input: HDMI 2.0 x 1, DisplayPort 1.4 x 1, USB-C x 1 (upstream, DP Alt mode, Data, PD up to 100 W)
Sync Input: Separate Sync
Audio (In/Out): Audio out
HDCP: HDCP 1.4 (HDMI/DisplayPort/USB-C), HDCP 2.2 (HDMI/DisplayPort/USB-C)
HBR3: HBR3 (USB-C/DisplayPort)
USB Hub: USB 3.2 Gen 1/5 Gbps, USB-B upstream x 1, USB-A downstream x 4 (with 1 for fast charge B.C 1.2), USB-C downstream x 1 (Data, PD 15 W)

Power Delivery

Max power delivery: Up to 100 W* (5 V/3 A, 7 V/3 A, 9 V/3 A, 10 V/3 A, 12 V/3 A, 15 V/3 A, 20 V/4.8 A)
Version: USB PD version 3.0

Convenience

Built-in Speakers: 5 W x 2
Plug and Play Compatibility: DDC/CI, Mac OS X, sRGB, Windows 11/10/8.1/8/7
User convenience: KVM, SmartImage, Input, User, Menu, Power On/Off
OSD Languages: Brazil Portuguese, Czech, Dutch, English, French, Finnish, German, Greek, Hungarian, Italian, Japanese, Korean, Portuguese, Polish, Russian, Simplified Chinese, Spanish, Swedish, Traditional Chinese, Turkish, Ukrainian
Other convenience: Kensington lock, Earphone hook, VESA mount (100 x 100 mm)
Control software: SmartControl
MultiView: PIP/PBP mode, 2 x devices
KVM: Yes (USB-C/USB-B)

Stand

Height adjustment: 150 mm
Swivel: -/+ 180 degree
Tilt: -5/30 degree
Slant adjust: -/+ 2 degrees

Power

Power supply: Built-in, 100–240 VAC, 50–60 Hz
Off mode: Zero watts with AC switch
On mode: 36 W (typ.) (EnergyStar test method)
Standby mode: 0.4 W (typ.)
Power LED indicator: Operation - White, Standby mode - White (flashing)

Dimensions

Packaging in mm (W x H x D): 1070 x 507 x 226 mm
Product without stand (mm): 944 x 419 x 54 mm
Product with stand (max height): 944 x 628 x 280 mm

Weight

Product with packaging (kg): 17.65 kg
Product with stand (kg): 13.94 kg
Product without stand (kg): 9.72 kg

Operating conditions

Altitude: Operation: +12,000 ft (3658 m), Non-operation: +40,000 ft (12,192 m)
Temperature range (operation): 0°C to 40°C
Relative humidity: 20%-80 %
Temperature range (storage): -20°C to 60 °C
MTBF (demonstrated): 70,000 hrs (excluded backlight)

Sustainability

Environmental and energy: PowerSensor, LightSensor, Energy Star 8.0, EPEAT*, RoHS
Post-consumer recycled plastic: 85%
Recyclable packaging material: 100 %
Specific Substances: Mercury free, PVC/BFR free housing

Compliance and standards

Regulatory Approvals: CB, CE Mark, FCC Class B, ICES-003, CU-EAC, EAEU RoHS, SEMKO, TUV Ergo, TUV/GS, cETLus

Cabinet

Finish: Texture
Foot: Black
Front bezel: Black
Rear cover: Black

What's in the box?

Cables: HDMI cable, DisplayPort cable, USB-C cable, Power cable
Monitor with stand
User Documentation



* "IPS" word mark / trademark and related patents on technologies belong to their respective owners.
 * Response time value equal to SmartResponse
 * NTSC Area based on CIE 1976
 * sRGB Area based on CIE1931
 * For Video transmission via USB-C, your Notebook/device must support USB-C DP Alt mode
 * Activities such as screen sharing and online streaming over the Internet can impact your network performance. Your hardware and network bandwidth will determine the overall audio and video quality.
 * For USB-C power and charging function, your Notebook/device must support USB-C standard Power Delivery specifications. Please check with your Notebook user manual or manufacturer for more details.
 * If your Ethernet connection seems slow, please enter the OSD menu and select USB 3.0 or a higher version that can support the LAN speed up to 1G.
 * The USB-C power delivery of this display is up to 100 W (96 W in typical). The maximum power delivery will depend on your device.
 * When calculating energy costs saving from PowerSensor, both USB and Power delivery are excluded.
 * EPEAT rating is valid only where Philips registers the product. Please visit <https://www.epeat.net/> for registration status in your country.
 * The monitor may look different from feature images.