

## AXIS F2137-RE Fisheye Sensor

### 5 MP discreet fisheye sensor

This sensor unit delivers 5 MP and a 185° horizontal field of panoramic view. With a small cylinder-shaped form factor, it offers discreet installation. Designed to work with AXIS F91 Main Units, it can be combined with up to three other sensor units for maximum flexibility. Reliable under rough conditions, it has an operating temperature range from -40 °C to 60°C (-40 °F to 140 °F). It's compatible with the same accessories as other F21 sensors to simplify procurement, installation, and upgrade. Furthermore, this rugged sensor features SMA connectors and can withstand shock and vibration.

- > **High-quality 5 MP resolution**
- > **185° horizontal field of view**
- > **Rugged sensor unit with SMA connector**
- > **Can be installed in vehicles and machinery**
- > **IP66-/IP67-/IP6K9K-rated**



# AXIS F2137-RE Fisheye Sensor

## Camera

### Image sensor

1/2.78" progressive scan RGB CMOS  
Pixel size 2.0 µm

### Lens

Fixed focal, 1.98 mm, F2.0  
Horizontal field of view: 185°  
Vertical field of view: 125°  
Minimum focus distance: 0.3 m (1.0 ft)  
M12 mount, fixed iris

### Day and night

Fixed IR-cut filter

### Minimum illumination

Color: 0.25 lux at 50 IRE, F2.0

### Resolution

2592x1944 5Mp  
2560x1940 QuadHD

### Frame rate

Up to 30/25 fps (60/50 Hz) in 5MP and up to 60/50 fps (60/50 Hz) in quad HD<sup>1</sup>

### WDR

Forensic WDR: Up to 120 dB depending on scene

## Approvals

### EMC

CISPR 35, CISPR 32 Class A, EN 55035,  
EN 55032 Class A, EN 61000-6-1, EN 61000-6-2  
Japan: VCCI Class A  
Korea: KS C 9835, KS C 9832 Class A  
USA: FCC Part 15 Subpart B Class A

### Safety

CAN/CSA C22.2 No. 62368-1 ed. 3,  
IEC/EN 62368-1 ed. 3, IEC/EN 60950-22, UN ECE R118

## Environment

IEC 60068-2-1, IEC 60068-2-2, IEC 60068-2-14,  
IEC 60068-2-27, IEC 60068-2-64, IEC 60068-2-78,  
IEC TR 60721-4-5 Class 5M3 (Vibration Shock),  
IEC/EN 60529 IP66/IP67,  
IEC/EN 61373 Category 1 Class B,  
ISO 21207 (Method B), ISO 20653 IP6K9K, NEMA 250  
Type 4X

## Cybersecurity

### Documentation

*AXIS OS Hardening Guide*

*Axis Vulnerability Management Policy*

*Axis Security Development Model*

AXIS OS Software Bill of Material (SBOM)

To download documents, go to [axis.com/support/cybersecurity/resources](https://axis.com/support/cybersecurity/resources)

To read more about Axis cybersecurity support, go to [axis.com/cybersecurity](https://axis.com/cybersecurity)

## General

### Casing

IP66-, IP67-, IP6K9K<sup>-2</sup>, and NEMA 4X-rated  
Aluminum casing  
Color: black NCS S 9000-N

### Power

Typical 1 W, max 1.8 W

### Sustainability

PVC and BFR/CFR free

### Connectors

SMA connector

### Operating conditions

Temperature: -40 °C to 60 °C (-40 °F to 140 °F)  
Humidity: 10–100% RH (condensing)

### Storage conditions

Temperature: -40 °C to 65 °C (-40 °F to 149 °F)  
Humidity: 5–95% RH (non-condensing)

1. For sensor units and main units capture mode specifications, see capture mode table.  
2. In combination with a cable that has the same IP-rating

## Dimensions

For the overall product dimensions, see the dimension drawing in this datasheet.

58 mm (2.28 in)  
ø 29.8 mm (1.2 in)

---

## Weight

54 g (0.1 lb)

---

## Box content

Sensor, installation guide

---

## Required hardware

AXIS TU6004-E Cable, AXIS TU6005 Plenum Cable, AXIS F91 Main Unit, AXIS TU6007-E Cable

---

## Optional accessories

AXIS TU6002 Right-angle SMA adaptor  
For more accessories, go to [axis.com/products/axis-f2137-re-fisheye-sensor#accessories](https://axis.com/products/axis-f2137-re-fisheye-sensor#accessories)

---

## System tools

AXIS Site Designer, AXIS Device Manager, product selector, accessory selector, lens calculator  
Available at [axis.com](https://axis.com)

---

## Languages

English, German, French, Spanish, Italian, Russian, Simplified Chinese, Japanese, Korean, Portuguese, Polish, Traditional Chinese, Dutch, Czech, Swedish, Finnish, Turkish, Thai, Vietnamese

---

## Warranty

5-year warranty, see [axis.com/warranty](https://axis.com/warranty)

---

## Part numbers

Available at [axis.com/products/axis-f2137-re-standard-sensor#part-numbers](https://axis.com/products/axis-f2137-re-standard-sensor#part-numbers)

---

## Sustainability

### Substance control

PVC free, BFR/CFR free in accordance with JEDEC/ECA Standard JS709  
RoHS in accordance with EU RoHS Directive 2011/65/EU and 2015/863, and standard EN IEC 63000:2018  
REACH in accordance with (EC) No 1907/2006. For SCIP UUID, see [echa.europa.eu](https://echa.europa.eu)

---

### Materials

To read more about sustainability at Axis, go to [axis.com/about-axis/sustainability](https://axis.com/about-axis/sustainability)

---

## Environmental responsibility

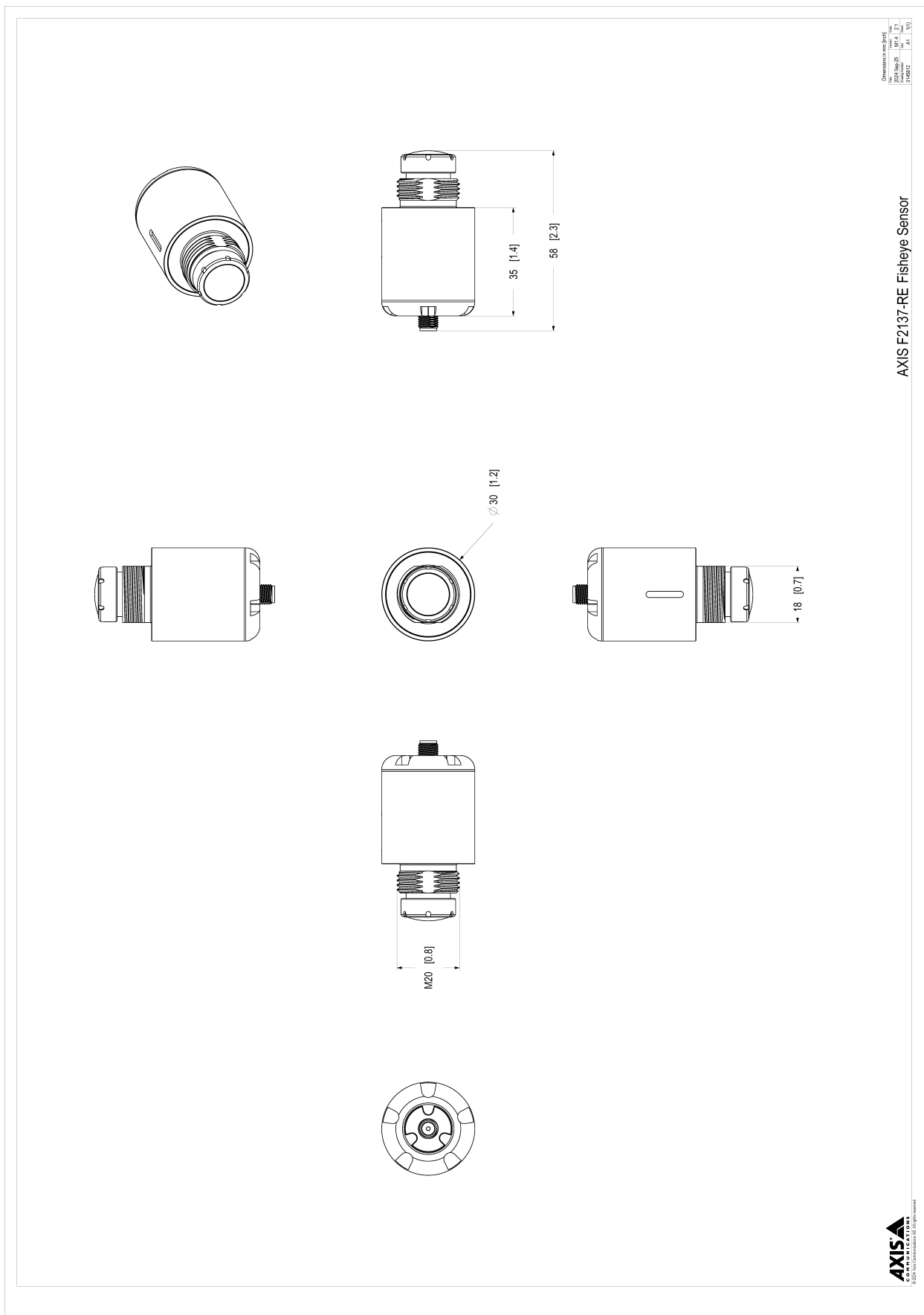
[axis.com/environmental-responsibility](https://axis.com/environmental-responsibility)  
Axis Communications is a signatory of the UN Global Compact, read more at [unglobalcompact.org](https://unglobalcompact.org)

## Capture mode

Capture mode includes frame rate and shutter speed for the sensor unit in combination with different main units.

Main unit	Resolution	Exposure	Frame rate (fps) (60/50Hz)	Shutter speed (seconds)
AXIS F9111, AXIS F9111-R Mk II	5 MP: 2592x1944	Without WDR	30/25	1/16000 to 1 s
		WDR	20/20	1/18000 to 1 s
	Quad HD: 2560x1440	Without WDR	60/50	1/27000 to 1/2 s
		WDR	30/25	1/18000 to 1 s
AXIS F9114	5 MP: 2592x1944	Without WDR	10/10	1/16000 to 1 s
		WDR	10/10	1/11000 to 2 s
	Quad HD: 2560x1440	Without WDR	15/12.5	1/15000 to 1 s
		WDR	15/12.5	1/11000 to 2 s
AXIS F9114-R Mk II, AXIS F9114-B Mk II, AXIS F9104-B Mk II	5 MP: 2592x1944	Without WDR	20/20	1/18000 s to 1 s
		WDR	20/20	1/18000 s to 1 s
	Quad HD: 2560x1440	Without WDR	30/25	1/18000 s to 1 s
		WDR	30/25	1/18000 s to 1 s

# Dimension drawing



Document name: F2137-RE  
Date: 2024-06-25  
1148912

AXIS F2137-RE Fisheye Sensor

## Highlighted capabilities

### IP69

IP ratings (ingress protection) are defined as a two-digit code where the first digit is the level of protection against the intrusion of solid foreign objects and the second digit is the level of protection against the intrusion of water.

IP69 – the product is dust-tight and hot pressure water can't harm the product.

### Rugged

Rugged is a term that for Axis modular and onboard products describes a device's endurance and stability in high vibration environments – over time. High vibration environments could be inside or close to machinery or inside vehicles. Rugged products from Axis are constructed to keep operating in these challenging conditions for the entire lifetime of the product.

For more information, see [axis.com/glossary](https://www.axis.com/glossary)